



raya[®]

LS-TT-SA

TABLETOP

LIGHT STAND

WITH SIDE ARM

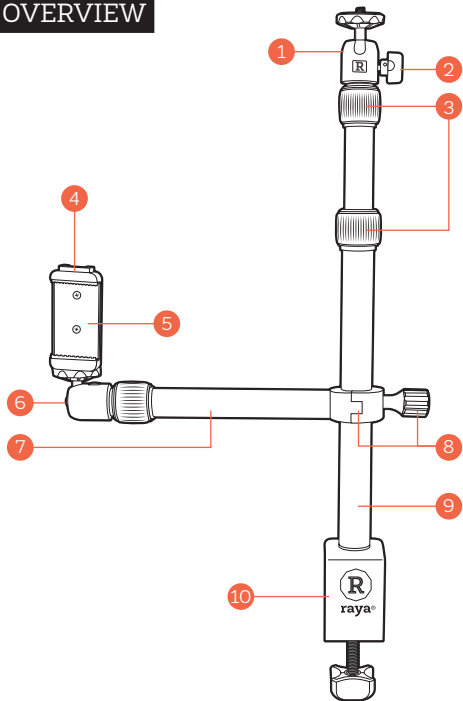
USER MANUAL



THANK YOU FOR CHOOSING RAYA

The Raya LS-TT-SA is a versatile light stand that clamps onto desks and tabletops up to 2 inches thick and provides a solid platform for the lights and accessories you need for a desktop production setup. Its multi-function design will hold a light fixture, and it features a sturdy side arm that will hold a camera, smartphone, or production accessory. A shoe mount is included on the smartphone clamp for mounting accessories like a microphone, LED, or articulating arm. Twist locks make height and side-arm length adjustment fast and effortless. Two mini ballheads are included for mounting 1/4-20 accessories such as lights, DSLRs, mirrorless cameras, and camcorders. The side arm is removeable and can be mounted on a separate light stand or any tube or pipe with a diameter up to 1.2 inches. All-aluminum construction makes this light stand strong and rigid so attached cameras and accessories won't shake or wobble.

OVERVIEW

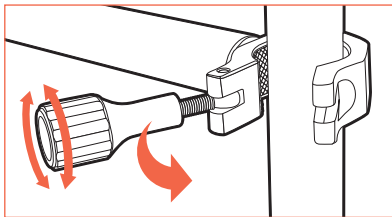


1. **Ballhead**
2. **Ballhead locking knob**
3. **Twist locks**
4. **Shoe mount**
5. **Smartphone holder**
Adjustable width
from 2.25 to 3.25 in.
6. **90° notch**
7. **Side arm**
Adjustable length
from 9 to 13.5 in.
8. **Clamp & knob**
Can be removed and
placed around a light
stand or pole.
Fits tube diameters
from 0.75 to 1.2 in.
9. **Main shaft**
Adjustable height
from 14 to 31.5 in.
10. **Desk clamp and locking knob**
Adjustable width from
0.25 to 2 in.

ATTACHING THE SIDE ARM

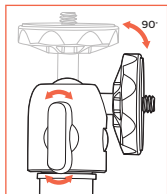
Attach the side arm to the any light stand or tube that has a maximum diameter of 0.75 to 1.2 inches.

Fit the side arm clamp around the light stand, and loosen the locking knob until it fits into the slot. Tighten the knob until the side arm is secure and does not slip.



THE BALLHEAD

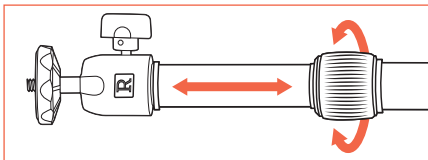
Use the locking knob to adjust pan and tilt. Use the 90° notch for switching from landscape to portrait orientation.



Important! Support the device with one hand when tightening the ballhead's locking knob. Make sure the locking knob is securely tightened and the ballhead doesn't move or slip once a device is mounted.

ADJUSTING THE HEIGHT AND

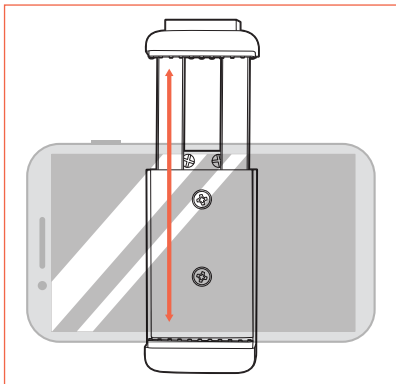
SIDE ARM LENGTH



SMARTPHONE CLAMP

The smartphone clamp is equipped with two 1/4-20 threaded sockets on the side and bottom. Screw it in to the ballhead's 1/4-20 screw. Spread the jaws to the width of your phone, and release the clamp.

The smartphone clamp is equipped with a shoe mount for adding compatible accessories like a microphone, LED, or an articulating arm.



PRECAUTIONS

- Please read and follow these instructions, and keep this manual in a safe place.
- Make sure that this product is intact and that there are no missing parts.
- Do not exceed the maximum load capacity.
- Clean the unit with only a soft, dry cloth.
- Make sure everything is secure before proceeding.
- All images are for illustrative purposes only.

SPECIFICATIONS

Number of Sections	Main riser shaft: 3 Side arm: 2
Working Height	14 to 31.5 in. (35.6 to 80 cm)
Side Arm Length	9 to 13.5 in. (22.9 to 34.3 cm)
Max Desk Clamp Range	2 in. (5.1 cm)
Side Arm Clamp Range	0.75 to 1.2 in. (19 to 31 mm)
Maximum Load	Main column: 6.6 lb. (3 kg) Side arm: 6.6 lb. (3 kg)
Weight	Stand: 1.3 lb. (572 g) Sidearm with smartphone clamp: 0.5 lb. (229 g)

ONE-YEAR LIMITED WARRANTY

This Raya product is warranted to the original purchaser to be free from defects in materials and workmanship under normal consumer use for a period of one (1) year from the original purchase date or thirty (30) days after replacement, whichever occurs later. The warranty provider's responsibility with respect to this limited warranty shall be limited solely to repair or replacement, at the provider's discretion, of any product that fails during normal use of this product in its intended manner and in its intended environment. Inoperability of the product or part(s) shall be determined by the warranty provider. If the product has been discontinued, the warranty provider reserves the right to replace it with a model of equivalent quality and function.

This warranty does not cover damage or defect caused by misuse, neglect, accident, alteration, abuse, improper installation or maintenance. EXCEPT AS PROVIDED HEREIN, THE WARRANTY PROVIDER MAKES NEITHER ANY EXPRESS WARRANTIES NOR ANY IMPLIED WARRANTIES, INCLUDING BUT NOT LIMITED TO ANY IMPLIED WARRANTY OF MERCHANTABILITY OR FITNESS FOR A PARTICULAR PURPOSE. This warranty provides you with specific legal rights, and you may also have additional rights that vary from state to state.

To obtain warranty coverage, contact the Raya Customer Service Department to obtain a return merchandise authorization ("RMA") number, and return the defective product to Raya along with the RMA number and proof of purchase. Shipment of the defective product is at the purchaser's own risk and expense.

For more information or to arrange service, visit www.rayalighting.com or call Customer Service at 212-594-2353.

Product warranty provided by the Gradus Group.

www.gradusgroup.com

Raya is a registered trademark of the Gradus Group.

© 2022 Gradus Group LLC. All Rights Reserved.



