

## HDC-3200

2/3-inch 4K 3CMOS Camera System



### Overview

#### **Spectacular 4K quality made brilliantly accessible**

The HDC-3200 system camera brings pristine 4K image quality and impressive versatility to every live production. Sharing many operational features with Sony's acclaimed HDC Series of cameras, the HDC-3200 features a highly sensitive 4K 3CMOS sensor with Global Shutter Technology, delivering sparkling picture quality with extremely low noise—even in dimly lit studios.

### Features

#### **Sensitive 2/3-inch 4K CMOS imager with global shutter**

The high-performance 2/3-inch 4K CMOS image sensor at the heart of the HDC-3200 achieves extremely high sensitivity with an impressive signal-to-noise ratio. Sony's class-leading Global Shutter Technology eliminates the 'jello effect' and banding noise, allowing the HDC-3200 to capture stable, precise 4K (UHD) images even with fast-moving subjects. Whether you're shooting in news studios with LED walls or live entertainment venues, viewers will appreciate premium pictures with exquisite 4K detail and high dynamic range, with support for the ITU-R BT.2020 wide color space.

#### **Quick conversion from handheld to large lens operation**

Compatibility with Sony's new HDLA-3505 and HDLA-

3501 large lens adaptors gives even more flexibility in live production environments. Unlike traditional 'build-up' kits, the adaptor allows fast one-touch mounting of the camera head without the need for time-consuming wiring and adjustments. As a further time-saving feature, the HDC-3200 can be undocked from the adaptor without needing to remove the lens.

### **Bigger returns from your production assets**

Sharing familiar ergonomics and operating workflow with Sony's acclaimed HDC camera family, the HDC-3200 is compatible with a wide range of camera system accessories including viewfinders, large lens adaptors, and camera control units. You'll benefit with reduced training requirements and optimized use of your existing hardware inventory.

### **Easy in-CCU recording**

Add the optional HKCU-REC55 to the HDCU-3500 Camera Control Unit and record 4K video and audio directly to the CCU, with no other external recording device needed. Recording can be controlled remotely from the CCU side, allowing the camera operator to focus on capturing beautiful images without distractions.

### **Ready for IP Live**

The HDC-3200 is a versatile, highly cost-effective partner for today's IP Live production workflows. The camera can be integrated seamlessly into your ST 2110 production infrastructure, either via the HDCU-3500/3100 CCU with IP interface option, or using HDCE-TX50/TX30 camera extension adaptor.

### **Simultaneous HDR and SDR production**

The HDC-3200 supports Sony's acclaimed SR Live workflow, reducing the cost and complexity of

simultaneous HDR and SDR program production by a single crew.

## Specifications

### General

Power requirements	AC 240 V, 1.4 A (max.), DC 240 V, 1.05 A (max.)
Operating temperature	-20°C to +45°C (-4°F to 113°F)
Storage temperature	-20°C to +60°C (-4°F to 140°F)
Mass	Approx. 4.6 kg (10 lb 2 oz)

### Imager

Imager	2/3-inch type 4K CMOS sensor with global shutter
Method	3-CMOS, RGB

### Electrical characteristics

Sensitivity	F10 with 1080/59.94p F11 with 1080/50p (at 2,000 lx with 89.9% reflectance)
Signal-to-noise ratio	-62 dB
Geometric distortion	Negligible (not including lens distortion)

## Optical system specifications

Spectrum system	F1.4 prism
Built-in filters	1: CLEAR, 2: 1/4ND, 3: 1/16ND, 4: 1/64N, 5: CROSS

## Input/output connectors

CCU	Electro-optical connector (LEMO 3K.93C connector) (x1)
LENS	12-pin (x1)
VF	20-pin (x1)
MIC 1 IN	XLR 3-pin, female (x1)
AUDIO IN CH1, CH2	XLR 3-pin, female (x1 each) AUDIO switch for MIC: -60 dBu (can be selected up to -20 dBu in the menu), balanced AUDIO switch for LINE: 0 dBu, balanced
INTERCOM	XLR 5-pin, female (x1 each)
EARPHONE	4-pole mini jack (x1), (2-pole mono, 3-pole stereo, 4-pole CTIA standard, 4-pole OMTP standard)
DC IN	XLR 4-pin (x1), DC 10.5 to 17 V 4-pin (x1), DC 10.5 to 17 V,

DC OUT	max. 0.5 A <sup>*1</sup> , 2-pin (x1), DC 10.5 to 17 V, Max. 2.5 A <sup>*1</sup>
SDI 1	BNC (x1)
SDI MONI	BNC (x1)
TEST OUT	BNC (x1)
PROMPTER/GENLOCK	BNC (x1) PROMPTER 1 Vp-p, 75 Ω GENLOCK HD: SMPTE ST274, tri-level sync, 0.6 Vp-p, 75 Ω, SD: Black burst (NTSC: 0.286 Vp-p, 75 Ω/PAL: 0.3 Vp-p, 75 Ω)
RET CTRL	6-pin (x1)
REMOTE	8-pin (x1)
TRACKER	12-pin (x1)
USB	USB 2.0 Type A 4-pin (x1) (for connecting USB drive)
Supplied accessories	Before Using This Unit (1), Operating Instructions (CD-ROM) (1), Cable clamp belt (1 set), Screws (+B3×8) (2), Attached label (1), Camera number label (1)

## Note

\*1

This may be limited by the imposed load or inputs.

## Optical Low-Pass Filter

In cases where a HDC-3200 Series camera's built-in filter does not fully reduce the moire caused by some LED walls, the optional optical low pass filter (OLP) will help further reduce the moire effect (part number: 1-856-731-31).

## Related products



### HDVF-L750

Full HD 7-inch LCD viewfinder



### HDCE-TX30

IP camera extension adaptor for remote live production (transmitter)



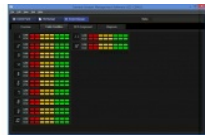
### HDVF-EL75

7.4-inch OLED Viewfinder for portable cameras



### HDCU-3100

IP-enabled next-generation Camera Control Unit



### HZC-CSM10

Master Setup Unit (MSU) PC Software



### RCP-3100

Joystick-type remote control panel for HDC/HSC/HXC series cameras.  
<br>5 units in 19-inch EIA rack.

## Gallery

