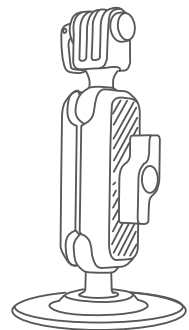


ADHESIVE MOUNT

ACTION CAMERA



PGYTECH

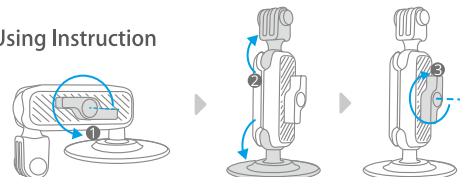
In The Box



Specifications

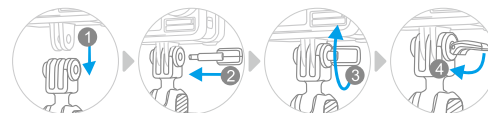
Product Name:PGYTECH Action Camera Adhesive Mount
Item Number: P-GM-154
Main Materials:TPU, Aluminum Alloy, PC+ABS

Using Instruction

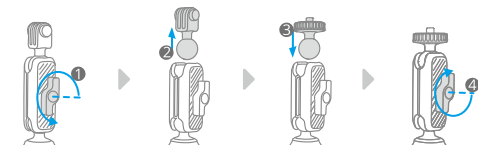


Use alcohol pads to wipe the surface and wait for at least 24 hours before first use.

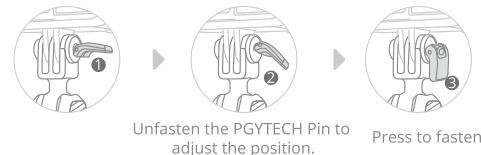
Install PGYTECH Pin



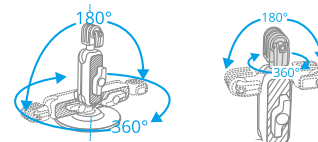
Mount 1/4\"/>



Functions



Unfasten the PGYTECH Pin to adjust the position. Press to fasten.



Note: The two balls allow tilt movement and 360°rotation.



WARNING



1. Initial adhesion: When the environment temperature is $\geq 10^{\circ}\text{C}$, use the gear at least 24 hours after pressing the base to bond; When the environment temperature is below 10°C , use a hair dryer to heat it when pressing and pasting it, and wait at least 24 hours before first use.

2. Environment temperature: $-10^{\circ}\text{C} / 40^{\circ}\text{C}$

3. Attention:
Usually, the body or dashboard of most cars is coated with a layer of wax upon delivery, which will affect the 3M VHB tape's adhesive effect. Please be sure to wipe with alcohol pads before pasting.

Note:
a. The product comes with alcohol pads and may have some effects on the appearance of the pasted object.
b. If removed after some time, there may be a color difference between the pasting and other positions.

ARE YOU READY TO CREATE WITH PGYTECH?
WIN THE WEEKLY CHALLENGE AND
GET YOUR FREEBIES.

#CREATEWITHPGYTECH #PGYTECH



pgytech.com @PGYTECH PGYTECH PGYTECH PGYTECH

Question & Support: support@pgytech.com