

aaxa
TECHNOLOGIES

P2jr Pico Projector

User Guide



Caution!

WARNING: Please use this product as instructed. Misuse may cause injury or death.

DO NOT use while driving

DO NOT expose to water or wet surfaces. Electric shock may occur

DO NOT expose the LED to your eyes or the eyes of others

DO NOT block or restrict airflow from ventilation holes as this may cause the projector to overheat

Keep the projector, battery, or charger away from any heat sources

Caution for Battery Use

- Do not pierce or puncture the battery with sharp objects
- Do not heat the product or expose it to high temperature.
- Do not wet it or place it in any liquid

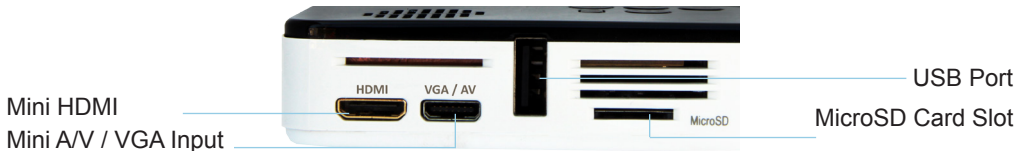
Table of Contents

2	Chapter 1: P2jr at a glance	18	Connecting to a USB drive
2	Main Unit	20	Chapter 3: Menu Screens
3	Keypad	20	Main menu
4	Accessories	21	File Menu System
5	Chapter 2: Getting Started	22	Video Player Menu
5	Powering On / OFF	24	Photo Viewer Menu
6	Focus Adjustment / Throw	26	Music Player Menu
	Distance	28	Text Viewer Menu
7	External Inputs /Output Sources	29	Setup Menu
8	Connecting to a Computer	32	Chapter 4: Technical Details
12	Connecting to Composite Video	32	Troubleshooting
14	Connecting to HDMI Video	34	Specifications
16	Connecting a MicroSD Card		

P2jr at a Glance

Chapter 1

Main Unit



Keypad

Exit/Back

This key allows you to return to the previous menu or exit from the media player option.

Directional Keypad

Use these keys in highlight the selection you which to choose.



Power ON / OFF

Holding down the power button for 3 seconds will either turn the P2Jr ON or OFF.

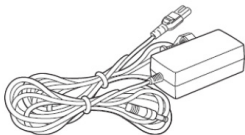
Confirm Selection

Use this key to select the current highlighted option.

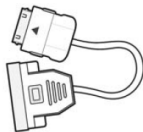
*More detailed direction of the keypad will be discussed in individual subsections.

Accessories

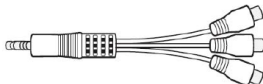
Standard Accessories



Power Adapter

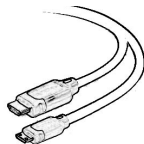


VGA Cable



Composite A/V Cable

Sold Separately



Mini-Full HDMI

*Under various circumstances, the actual accessories may be different from those shown in the pictures above.

Powering ON the projector

1. Connect the power cord to the P2jr.
2. Connect the wall plug into the wall power source.
3. Press the POWER button and hold for 2-3 seconds to switch on or switch off the power
 - The LED turns red while charging.
 - The LED turns green when charging is finished.
 - 4 hours of charge time is required to reach a full charge.

Powering OFF the projector

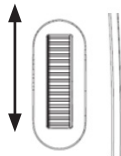
1. Press and hold the power button for 3 seconds.
2. The optical engine should power off and the fan should stop spinning.

Note: The P2jr Projector battery does not charge when it is in operation.

Focus Adjustment / Throw Distance

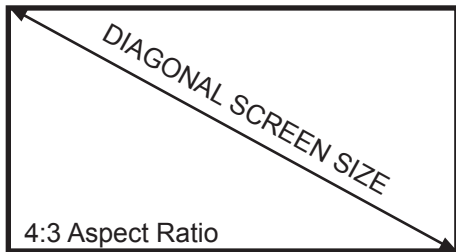
Focus Adjustment

1. Spin the focus wheel up or down until the image becomes clear.
2. The recommended focus distance for this projector is 12" to infinity.



Throw Distance Chart

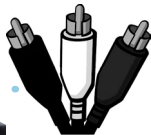
Distance inch (")	Diagonal Inch (")
10	8
15	12
20	16
30	24
40	31
50	39
60	47
70	55



Throw Ratio 1.25:1

*minimum throw distance: 10 inches

External Inputs/Outputs



Composite Cable



HDMI Cable



Laptop



Desktop



USB Stick



Micro SD Card

Connecting to a Computer via VGA

Step 1:

Connect the large end of the



VGA Cord

to your computer's



VGA Adapter

Step 2:

Connect the small end of the



VGA Cord

to your P2jr's



VGA Adapter

Step 3:

In the Main Menu

Select "VGA" icon

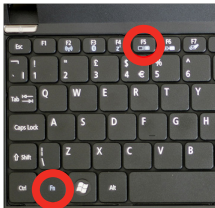


Connecting to a Computer Cont.

Step 4:

Enabling VGA or HDMI output on your Computer – To enable VGA or HDMI output on your computer most computers require “turning on” the video output feature. Each computer is different. Please consult your owner’s manual for instructions to enable VGA or HDMI output. Below are standard instructions for a Windows XP computer – not all systems are the same.

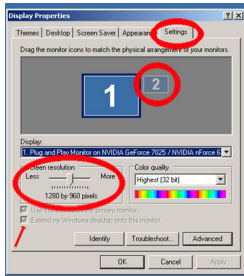
Step 5:



Press function & “F5” to instruct the computer to enable multiple displays.
You can also press Windows+P to toggle through display settings.

*NOTE: different operating systems may differ

Step 6:



1. Right click on computer desktop and select “Properties”
2. Display Properties window will pop up
3. Click on the “Settings” Tab
4. If a secondary monitor is grayed out, click on it and check “Extend my Windows Desktop onto this monitor”
5. If the image is blurry or the text is not legible, adjust the screen resolution. We recommend 800x600 or 1024x768.

Connecting to a Computer via HDMI

Step 1:

Connect the large end of the



HDMI Cord

to your computer's



HDMI Adapter

Step 2:

Connect the small end of the



HDMI Cord

to your P2jr's



HDMI Adapter

Step 3:

In the Main Menu



Select "HDMI" icon

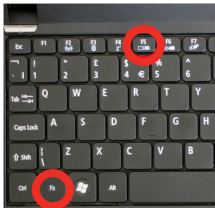
The P2jr requires a mini
to full HDMI cable

Connecting to a Computer Cont.

Step 4:

Enabling VGA or HDMI output on your Computer – To enable VGA or HDMI output on your computer most computers require “turning on” the video output feature. Each computer is different. Please consult your owner’s manual for instructions to enable VGA or HDMI output. Below are standard instructions for a Windows XP computer – not all systems are the same.

Step 5:

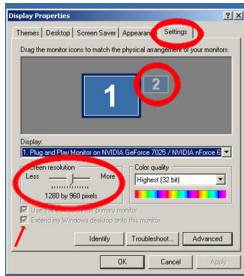


Press function & “F5” to instruct the computer to enable multiple displays.

You can also press Windows+P to toggle through display settings.

*NOTE: different operating systems may differ

Step 6:



1. Right click on computer desktop and select “Properties”
2. Display Properties window will pop up
3. Click on the “Settings” Tab
4. If a secondary monitor is grayed out, click on it and check “Extend my Windows Desktop onto this monitor”
5. If the image is blurry or the text is not legible, adjust the screen resolution. We recommend 800x600 or 1024x768.

Connecting to Composite Video

Step 1:

Connect one end of the



to your P2jr's



Composite A/V Cord

A/V Adapter

Step 2:

Connect opposite end of



to your devices



Composite A/V Cord

Composite A/V Cord



Connecting to Composite Video Cont.

Step 3:

In the Main Menu



Select "AV" icon

Step 4:

Turn on your multimedia device.

Connectivity with multimedia devices

The P2jr can connect to many media devices including: iPod, iPhone, iPad, VHS players, DVD players, smart phones, cameras, video game consoles and other peripherals with ease.

*Apps on smart phones require video out capabilities to be displayed with the P2jr.

Connecting to HDMI Video

Step 1:

Connect one end of the



Mini-HDMI

to your P2jr's



HDMI Adapter

Step 2:

Connect opposite end of



HDMI

to your devices



HDMI Adapter



Connecting to HDMI Video Cont.

Step 3:

In the Main Menu



Select "HDMI" icon

Step 4:

Turn on your multimedia device.

Connectivity with multimedia devices

The P2jr can connect to many media devices including: iPod, iPhone, iPad, VHS players, DVD players, smart phones, cameras, video game consoles and other peripherals with ease.

*Apps on smart phones require video out capabilities to be displayed with the P2jr.

MicroSD Card

How to insert your MicroSD Card

- Slide in your SD card into the SD card slot on the side of the P2jr. (as shown in picture)
- Gently slide the SD card until it *clicks* into place.

How to access your MicroSD Card

- Once your SD card has been inserted, you can view the files located in SD card icon in the main menu.
- After selecting SD card mode, you should now be able to access the data on the SD device through the onboard media player.

***Review the Specification section of this manual to read about the supported file formats.**



MicroSD Card Cont.

1)

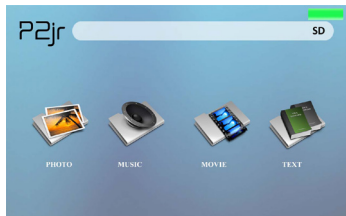


Select the "MicroSD" icon

Media Player menu

- In the Media Player selection you can choose from the options: Photo, Music, Video, Text
- Select the appropriate menu for the type of file you wish to view.

2)



File Menu System

- The P2jr will show all folders and files you have on your SD Card.
- Use the directional buttons to navigate to different folders or files.



Return: Brings you back to the main menu



Up Folder: Brings you back to the previous folder

USB Reader

How to insert your USB Drive

- Slide your USB Drive into P2jr. (as shown in picture)
- Gently slide the drive until it cannot go in any further

How to access your USB Drive

- Once your USB Drive has been inserted, you can navigate to the USB icon in the main menu.
- After selecting USB Drive Mode, you should now be able to access the data on the USB drive through the onboard media player.

***Review the Specification section of this manual to read about the supported file formats.**



USB Reader Cont.

1)

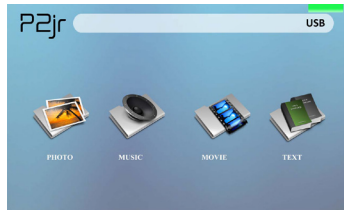


Select the “USB” icon

Media Player menu

- In the Media Player selection you can choose from the options: Photo, Music, Video, Text
- Select the appropriate menu for the type of file you wish to view.

2)



File Menu System

- The P2jr will show all folders and files you have on your USB Drive.
- Use the directional buttons to navigate to different folders or files.



Return: Brings you back to the main menu



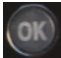



Up Folder: Brings you back to the previous folder

Main Menu

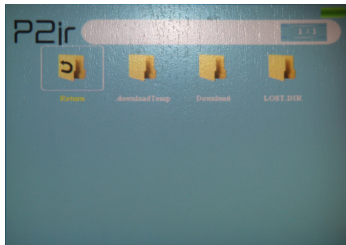
To access the main menu simply turn on the projector by pressing and holding the Power button for 3 seconds.



- Scroll Left/Right by pressing   buttons on the keypad.
- To select a submenu, highlight the desired submenu and press the  button located in the middle of the keypad.
- To go back to the previous page while in a submenu, press the back  button.

File Menu System

The P2jr will show all folders and files you have on your USB or MicroSD Drives. Use the directional buttons to navigate to different folders or files.



Opening a file:

- Choose Movie, Music, Photo or Text
- Select device file is stored on
- Select file from within folders, or current list



Return: Brings you back to the main menu




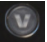

Up Folder: Brings you back to the previous folder

Previewing Files:

- Press the directional keys to highlight the item of interest
- Wait 2-3 seconds and a preview of the video will show on the screen

Video Player Menu

Viewing Videos

To adjust the volume simply press the  or  keys on the projector. For more options, press the  to reveal more options.



Move selection left

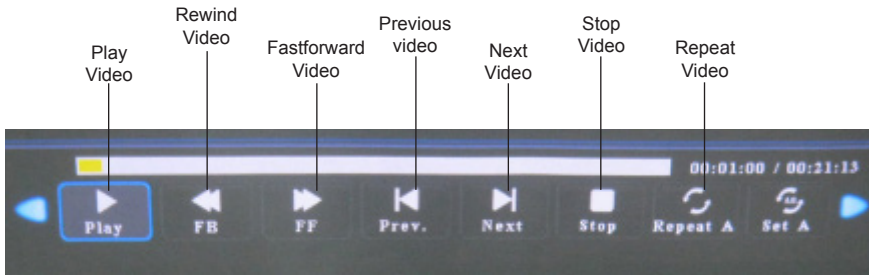


Move selection right



Confirm selection

- To open the video player menu, press “OK” on projector.
- To close the video player menu, hit “back” on projector.



Video Playback FAQ

How do I loop a video?

1. Choose either USB or SD Card for playback



2. Navigate the folders until you reach the file you wish to play.
3. Highlight the file you want to play, then confirm the selection.
4. Move selection on video player menu to “repeat”, and confirm the selection.
5. The video will now loop after playback is finished.

How do I preview a video?

1. Choose the “video” option from the main menu
2. Navigate using onboard buttons to the file you wish to preview.
3. Highlight the file. *Do not select the file, just highlight it.
4. Wait for 3-4 seconds.
5. A preview screen will pop up on the lower right for the video.

Photo Menu

Viewing Pictures

To use the photo controls, use the directional keys to highlight the option you wish to choose.



Move selection left



Move selection right



Confirm selection

- To open the photo player menu, press “OK” on projector.
- To close the photo player menu, hit “back” on projector.

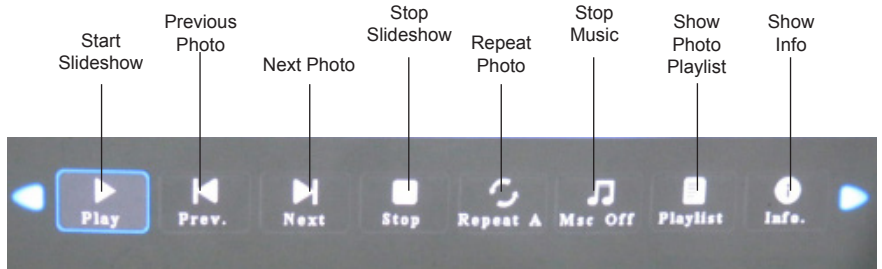


Photo Slideshow FAQ

How do I play a slideshow?

1. Choose either USB or SD Card for playback



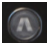
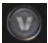

2. Navigate to the folder that contains the pictures you wish to see in the slideshow
3. Confirm selection of the first picture.
4. Press “play” in the photo menu
5. Slideshow will not play.
6. NOTE: Selecting “repeat” will loop slideshow.

How do I manually control the slideshow?

1. After selecting the photo you wish to be displayed, you can press “play” to start the slideshow (as outlined in the previous FAQ).
2. To manually control the slideshow, you must stop the slideshow with the “stop” button.
3. Controls on top of the P2Jr allow you to manually flip through the pictures in the current playlist.

Music Player Menu

Listening to Audio

To adjust the volume simply press the  or  keys on the projector. For more options, press the  to reveal more options.



Move selection left

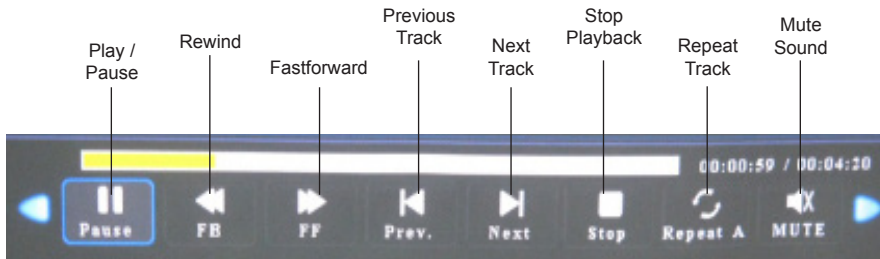


Move selection right



Confirm selection

- To open the music menu, press “OK” on projector.
- To close the music menu, hit “back” on projector.



Music Playback FAQ

How do I loop a song?

1. Choose either USB or SD Card for playback



2. Navigate the folders until you reach the file you wish to play.
3. Highlight the file you want to play, then confirm the selection.
4. Move selection on music player menu to “repeat”, and confirm the selection.
5. The song will now loop after playback is finished.

How do I create a song playlist?

1. Insert your media device (either MicroSD card or USB) into computer.
2. Make a new folder on media device (folder name will be the name of the playlist).
3. Transfer songs from computer to the new folder, name accordingly.
4. Remove media device from computer and insert into projector.
5. Navigate to Audio section, then choose appropriate media device.
6. Navigate to your playlist folder.
7. Start at first song.
8. Playback will follow each successive song on the list.

*To create a special order for the list, add numerical numbering to the beginning of each file.

Text Viewer Menu



Opening a file:

- Choose “Open File” option
- Select device file is stored on
- Select file from list

The P2jr will show all folders and files you have on your USB or SD Drives. Use the directional buttons to navigate through different folders or files.

Previewing Files:

- Press the directional keys to highlight the item of interest
- Wait 2-3 seconds and a preview of the song will show on the screen

Viewing text files

The P2jr Pico Projector allows you to view text files. Select the file you want to view in the file menu for the particular storage device on which the file is stored. You can press the left and right arrow buttons on the directional pad to flip through the pages you have in the present folder.



*Review Specification section of this manual for supported Text formats.

Setup Menu



The Settings Menu can be accessed by selecting “Settings” on the main



Within the Setting Options, there are a few sets of submenus including:

Picture

- Picture mode

Adjusts Contrast, Brightness, Color, Sharpness & Tint

- Color Temperature

Adjusts Color ratio of red, green, and blue

- Aspect Ratio

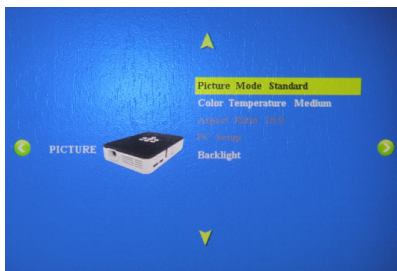
Choose between 16:9, 4:3, Zoom and more

- PC setup

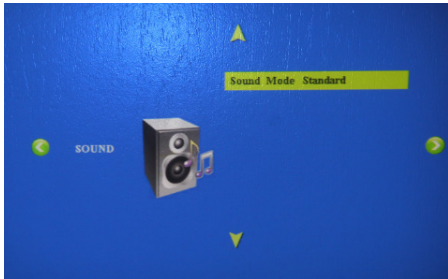
Additional options are available when connected to PC via HDMI or VGA

- Backlight

Adjust low or high brightness modes. Higher brightness increases fan noise.



Setup Menu Cont.



Sound

- Sound Mode
- Adjust Treble and Bass levels



Time

- Clock
- Adjust current time
 - Off timer

Adjust time when P2jr will turn off after being idle
 - Sleep timer

Set timer for P2 to automatically turn off

Setup Menu Cont.



Option

- OSD Language
Change Language to English, French, Dutch, Spanish, Portuguese or Chinese
- Restore Factory Default
Reset P2jr back to default settings
- Blending
Adjust the blending option
- OSD Duration
Adjust automatic timer to return to main screen when idle.

Troubleshooting

IMAGE IS BLURRED

Possible Causes	Solution
The Projector is not in focus	Adjust the focus with the focus adjustment dial until the image comes into focus
The Projector is offset from plane / angle of operation	Move the projector so that it is both 180 degrees and on an even plane with the screen.

No Sync, No Signal

1. Be sure to setup the computer to enable a video signal output. On some laptops this is done by pressing and holding Function F5 key. If using the P2jr as an external monitor on Windows based systems, this can be done by selecting "extend my desktop to this monitor".
2. Depending on the video driver different resolutions may need to be selected for proper output.

Technical Details

Troubleshooting

THE PROJECTOR DOES NOT TURN ON

Possible Causes	Solution
There is no power	Check to ensure the power outlet or battery source is good. Check the power adapter to ensure a proper connection with the wall outlet as well as the projector. Confirm that the unit is charged and has enough power
The power button was not held long enough	To power on the projector, the power button needs to be depressed for a full 3 seconds. Try holding the power button until the optical engine turns on

NO PICTURE / FILE NOT SUPPORTED

Possible Causes	Solution
The video source is not properly connected or selected	Check the video source signal to ensure that it is properly connected. Select the current input source by choosing the input desired from the main menu
Incorrect file extension / Video is encoded with incorrect codec	Please refer to "Specifications" page to see which file types and codec are supported. Verify that the file was encoded properly.

Specifications

Brightness	55 Lumens
Maximum Resolution	WXGA(1920x1080)
Contrast Ratio	1000:1
Projection Lens:	Manual Focus
Battery life:	up to 120 minutes
Image Size:	10~60 inches
Lamp:	15,000 hour RGB Triple LEDs
Video in:	Composite A/V
	VGA(mini-VGA)
	HDMI(mini-HDMI)
Audio Output:	1.0 W stereo speaker
MicroSD Card:	MicroSD Card Slot
	(16 GB maximum)
USB:	USB (Memory Sticks)
	(16 GB maximum)
Dimensions:	4.2 x 2.9 x 0.82 inch
Weight:	0.3 lbs
Supported File Formats:	AVI, MPG, MP4, MP3, JPG, TXT

Please direct all customer service inquiries to:

AAXA Technologies, Inc.
1541 Parkway Loop Suite F
Tustin, CA 92780
(714) 957-1999
info@aaxatech.com