

ACTION MODULE

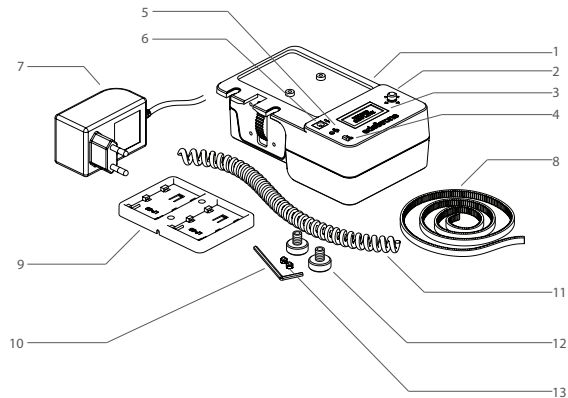
USER'S MANUAL

Before operating your edelkrone,
please watch the users manual video.

TABLE OF CONTENTS

1. WHAT'S IN THE BOX & THE BASICS.
2. MOUNTING YOUR ACTION MODULE TO YOUR SLIDERPLUS
3. CAUTIONS AND TIPS
4. WIZARD MODE
5. MACRO MODE
6. PHOTO TIMELAPSE MODE
7. VIDEO TIMELAPSE MODE
8. STOP MOTION MODE

1. WHAT'S IN THE BOX & THE BASICS

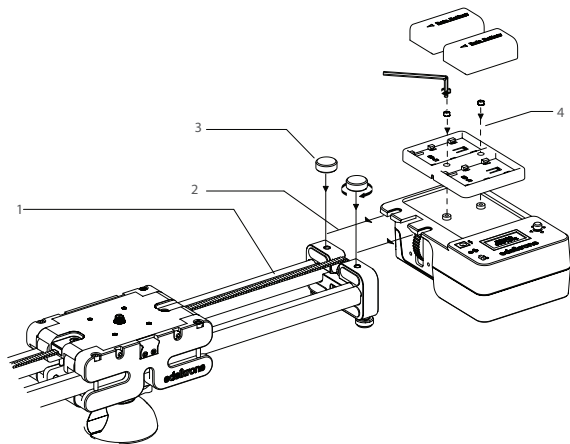


- | | | |
|-------------------------|------------------------|----------------------------|
| 1/ Action Module | 6/ DC socket | 11/ Shutter trigger cable* |
| 2/ Control button | 7/ AC-DC adaptor* | 12/ Attachment screws |
| 3/ Screen | 8/ Motion control belt | 13/ Battery bracket screws |
| 4/ On/Off switch | 9/ Battery bracket | |
| 5/ Shutter trigger port | 10/ Allen wrench | |

*Shutter trigger cable sold separately.

*The shape of the plug adapter varies with the country or region

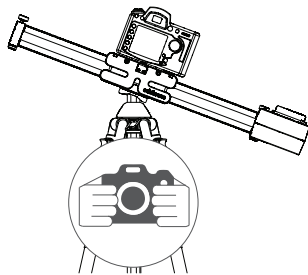
2. MOUNTING YOUR ACTION MODULE TO YOUR SLIDERPLUS



- 1/ Attach the belt
- 2/ Place the action module to its position
- 3/ Place the screws to their positions

- 4/ If the action module is going to be powered by batteries, place the battery bracket to its position & attach the screws

3. CAUTIONS & TIPS



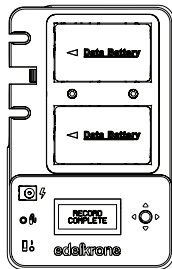
During inclined operations, you may need to assist the slider movement with your hands by carrying the weight of your equipment. Action module only assists the momentum of the movement to smoothen your shot. Do not take your hands off your camera for the safety of your equipment.



Do not slide too fast in order to prevent skipping on the belt.



Do not attempt to move the slider by hand except when using wizard mode.



Do not attempt to operate the slider when Action is mounted to SliderPLUS even when the unit is powered off.



When Action is set to recording mode, do not apply excessive speed to the unit.



Use fully charged batteries or ac-dc adaptor to get better results.



Do not attempt to disassemble the module. This will void your warranty.



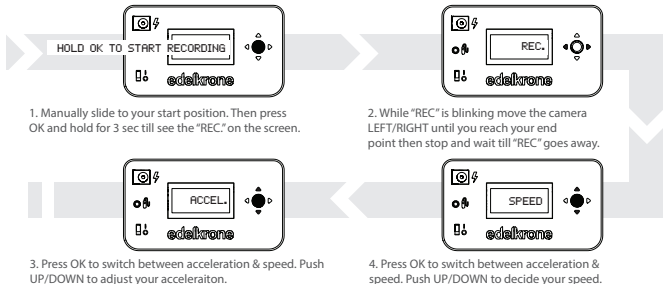
Detailed video explaining how to attach this belt and mounting details can be found from : manuals.edelkrone.com



Before operating your product, please watch the users manual videos from the link: manuals.edelkrone.com

4. "WIZARD MODE"

In Wizard mode, Action Module records and repeats your slides. It will record the start and end positions and average speed of your slide instantly. Also learns your average speed instantly. After selecting the mode, follow these steps to record and playback your slides.



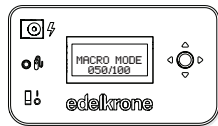
	STATIONARY	IN MOTION
RIGHT	Go to right point	Stop
LEFT	Go to left point	Stop
HOLD RIGHT	Go to right point	Stop
HOLD LEFT	Go to left point	Stop
UP	Increase speed	
DOWN	Decrease speed	
PRESS OK	Changes to the selection between "acceleration-speed"	
DOUBLE RIGHT	Loop between right & left point	Stop
DOUBLE LEFT	Loop between right & left point	Stop

In this mode use hand control to move the camera

5. "MACRO MODE"

Macro Mode designed to perform extreme slow slides.

You don't need trigger cable for this mode. Select the mode and follow these steps. If action module is not on macro mode, turn off the device and turn it on again to be able to choose macro mode.



	STATIONARY	IN MOTION
RIGHT	Starts moving to the right	Stop
LEFT	Starts moving to the left	Stop
HOLD RIGHT/LEFT	press and hold to LEFT/RIGHT to move faster and once the button is released, Action Module will revert to the original speed.	
UPWARDS	increase speed	
DOWNWARDS	decrease speed	

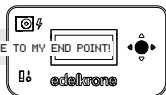
In macro mode system works in higher torques which may help you to operate in inclined operations.

In these modes use left/right control buttons to move the camera. Do not operate the slider by hand.

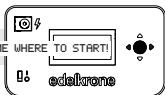
Before operating your product, please watch the users manual videos from the link: manual.edelkrone.com

6. "PHOTO TIME LAPSE MODE"

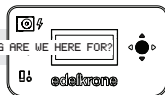
If you are a DSLR / mirrorless user, you could perform time lapse shots with the help of the Photo Time Lapse Mode. Attach the trigger cable, select the mode and follow these steps. If Action Module is not on Photo Time Lapse Mode, turn off the device and turn it on again to be able to choose Photo Time Lapse Mode.



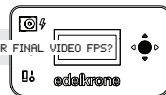
1. Use LEFT/RIGHT buttons to move your camera to the end point position. By choosing same end and start points you could perform Steady Time-Lapse.



2. Use LEFT/RIGHT buttons to move your camera to the start point position.



3. Push UP/DOWN buttons to set duration of time lapse.



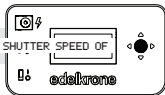
4. Push UP/DOWN buttons to set your frame rate.



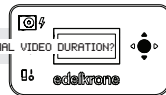
8. Push UP/DOWN buttons to choose when to start. Now, or set a countdown.



7. Push LEFT/RIGHT buttons to enable/disable ease in/out option.



6. Set up your camera's shutter speed according to value on the screen in order to prevent slide overlaps.



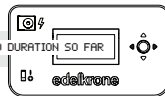
5. Push UP/DOWN buttons to set your final video duration.



9. The system will start begin the countdown to your time lapse.



10.1. While in operation, pushing LEFT/RIGHT buttons shows the information of percentage completed and continues as.



10.2. The duration of the final video so far.



10.3. Elapsed time so far



10.5. Pause the process and it will memorize where it paused.



10.4. Remaining time to finish.



To go back to previous question press OK and wait 3 secs.



Action Module can perform time lapses up to 365 days. Be prepared the unit by either hot swapping or using an AC-DC adapter.



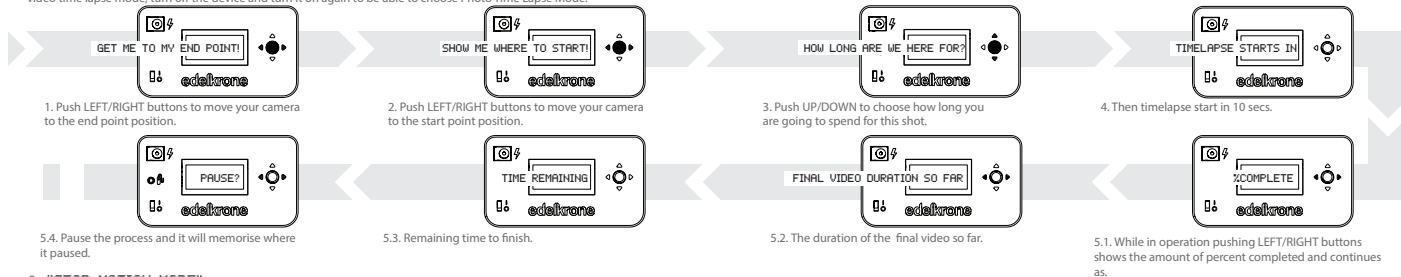
In this mode use left/right control buttons to move the camera.



Before operating your product, please watch the users manual videos from the link: manuals.edelkrone.com

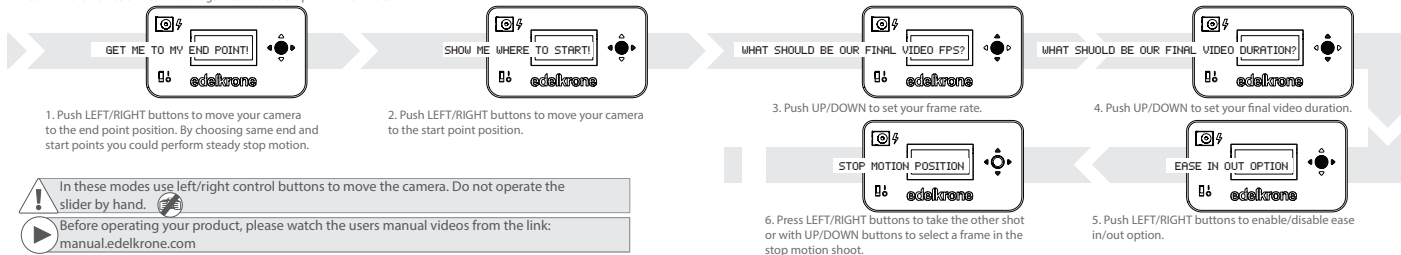
7. "VIDEO TIME LAPSE MODE"

This mode is designed for video cameras to get time lapse shots which do not have shutter trigger port to use it in Photo Time Lapse Mode. A Shutter trigger cable is not necessary for this. Select the mode and follow these steps. If Action Module is not on video time lapse mode, turn off the device and turn it on again to be able to choose Photo Time Lapse Mode.



8. "STOP MOTION MODE"

If you are a DSLR / mirrorless user, you could perform stop motion shots with the help of the Stop Motion Mode. Attach the trigger cable, select the mode and follow these steps. If Action Module is not on Stop Motion Mode, turn off the device and turn it on again to choose Stop Motion Mode.



In these modes use left/right control buttons to move the camera. Do not operate the slider by hand.



Before operating your product, please watch the users manual videos from the link: manual.edelkrone.com

DISPOSAL OF THE PRODUCT



Should the product become damaged beyond repair, or if you wish to dispose it, it must be disposed separately from the municipal waste stream via designated collection facilities appointed by the government or the local authorities. Observe the regulations of your area and country that relate to the disposal of electronic products.

DISCLAIMER

edelkrone cannot be responsible for damage caused by improper use or modification of the product.

- ▶ Keep your electronic Motion Control Unit away from all sorts of liquids.
- ▶ In order to preserve your Motion Control Unit and battery performance at their best, use exact same type of batteries with equivalent level of charge during dual-battery operation.
- ▶ Do not attempt to disassemble or modify any internal parts of your Motion Control Unit. If the device appears to be malfunctioning, discontinue use immediately and contact support for qualified service.
- ▶ Never force a different type of connector into a port.
- ▶ Never use or store your Motion Control Unit in areas subject to extreme temperatures, or high levels of vibration.
- ▶ If your motion control unit becomes unresponsive, disconnect and re-connect the power source. Make sure your AC/DC adapter is plugged in or your batteries are properly charged. If the problem persists, contact our support team.
- ▶ Environmental factors may affect your Motion Control Unit's performance. Keep your product away from environmental hazards such as dust or heavy resonance. Do not use chemical materials to clean your product.
- ▶ Only use included battery plate, AC/DC adapter or equivalent power sources. Use of an inappropriate power source may permanently damage your Motion Control Unit.
- ▶ If there is an impairment on the power or connector cable, stop using the Motion Control Unit immediately.
- ▶ Avoid dropping or causing physical damage to your Motion Control Unit.
- ▶ Do not place heavy objects on top of your Motion Control Unit.

