



SIGMA

SD14

THE SIGMA SD14
DIGITAL SINGLE LENS
REFLEX CAMERA

The SIGMA SD14
Unique. Groundbreaking.
And that's just the three-layer,
full-color image sensor.
This digital camera is about to
set a whole new standard
for image quality.



The SD14. The only camera that tells the whole truth.



Sigma's taken a good, hard look at the essence of photography.

Photography gives us the pleasure of expressing all the emotions that make up this life. To help photographers in their eternal quest for the perfect picture, Sigma has given the world more than a few fine photographic products.

Of course, some people find this surprising: they don't think lens manufacturers have any business making cameras and yet, the lens has always been an essential element in photographic expression.

It fulfills the human impulse to explore light, and the human eye's delicate perception of color. Sigma has closely studied photography and the optical systems that are photography's life-blood.

We were determined to put our own photographic philosophy fully into the field, so it was only a matter of time before we turned our hand to manufacturing digital SLR cameras.

All Sigma cameras are designed to capture the living world just as it is reflected in the human eye. To record the emotions of color in all their intensity.

Try a Sigma digital SLR camera for yourself. It will open your eyes to new horizons in photography.





The ideal camera for every impressionist.

All cameras have evolved to capture the moment better. To create a more vivid record of emotion. To deliver better image quality, better performance, better everything.

Digital cameras are the ultimate in clever technology. Yet, when it comes to conveying atmosphere, texture and other ineffable qualities perceived by the human eye, they just don't compare with old-fashioned film cameras.

A digital camera takes in basic optical data, and spins it into beautifully-colored shapes. We take this mechanism for granted, but it achieves its results at the expense of true optical fidelity. Unless, that is, you use the only digital SLR camera in the world designed for high image quality that makes no compromises at all: the Sigma SD14.

With the Sigma SD14, none of the optical data is lost.

There's no distortion. Light is transformed into a faithful image, with nothing left out. High image quality that cannot be achieved by manipulating optical data artificially, and synthesizing colors.

The SD14 uses a unique, groundbreaking direct image sensor capable of detecting red, green and blue light at every single pixel. The elements of this 14-megapixel sensor are arranged in three color-sensing layers, comparable to the three layers of emulsion in photographic film. The result is a camera that reflects the user's visual sensitivity, and gives fresh impact. It also delivers the kind of extremely vivid feel and texture that will overturn existing standards of image quality.

Only one camera tells the whole truth: the SD14. Just wait. It's going to stir your inmost, undiscovered photographic desires.



SIGMA

SD14





The ultimate in color sensitivity.

It's unique. It's groundbreaking.
It's an image sensor that reproduces
colors as faithfully as film.

The conventional image sensors
used in most DSLR cameras can only
detect light intensity. Using a color
filter, they use complex computations
to fill in the gaps in their color
perception, interpolating colors that
aren't really there, and artificially
synthesizing hypothetical hues.
This essential weakness of the color
synthesis mechanism is why most
digital cameras produce images that
are sharply-defined, but weak on
natural texture.

Most digital cameras, but not all.
Thanks to the Foveon X3®, a unique
and ground-breaking direct image
sensor, the SD14 is about to turn
conventional wisdom on its head.
The Foveon X3® has three layers
of color-sensing pixels — one for
red light, one for green and one for
blue — just like the three layers of
emulsion in photographic film.
These three layers capture absolutely
all the color directly, and record it
faithfully. Color is recorded without
any distortion, creating an extremely
vivid feel which out-performs the
pixel count by a long way.
The image quality is pure, and the
colors feel satisfyingly natural.

The SD14.

It's the only camera truly faithful to
the colors of nature.





The SD14. It's the only camera truly faithful to the colors of nature.





An invitation to quality.

With its wide dynamic range, pure RAW data opens up new possibilities in image quality.

The image data generated by the unique and groundbreaking Foveon X3® direct image sensor includes a full complement of color-resolution data, captured and recorded directly by three separate layers of pixels, sensitive to red, green and blue light respectively.

To make the most of the superb richness and purity of this data, Sigma recommends recording in the RAW data format. Of course, the dynamic range of JPEG mode can also be used for taking photos and exporting files, but when you need the utmost in image quality with data rich enough to allow plenty of scope for artistic expression, the RAW format comes into its own.

So rich is the SD14's data that even after you've taken the picture, there's still vast potential for improving the image quality. The result is impressive image quality, which brings out the color and texture of the subject, and puts you firmly in control of contrast and color adjustment.

The SD14.

The only camera that truly expands the capacity of your images.

Unleash your inner artist.

Are you pretty sharp with your darkroom techniques? The SD14 is your own digital darkroom.

Picture this: the moment when you open the RAW data on your computer. If the image that greets your eyes may seem a little crude, a little disappointing. Relax: our exclusive software, Sigma Photo Pro 3.0, will soon whip it into shape.

The adjustment mode is easy to understand, and simple to use: before your very eyes, your image will be transformed from mere data into a real photograph. Look through your mind's eye at the emotional imprint of the moment you pressed the shutter.

Now, all you may wish to do is delicately tweak the colors and textural tones of the image data, based on that mental image. Why not try the X3 Fill Light feature, which preserves highlight detail while adjusting halftones using a single slider control?

All the pleasure of artistic expression is yours to enjoy, just as if you were happily "dodging and burning" in an old-fashioned darkroom. If you like a good, clear image, and you care about image quality, there's only one camera for you.

The SD14.

The only camera designed for artists.





Intuitive controls: less is a lot more



We designed a camera that sets you free to simply take great pictures.

The camera should free you up to concentrate on getting the shot. That was our design policy for the SD14. We eliminated cumbersome operations and unnecessary extra functions, replacing them with an intuitive user interface, and rigorously honing the camera's basic performance until it was capable of handling the most difficult conditions.

The SD14 doesn't have any superfluous, complex functions. Just like a film camera, it combines high performance with structural simplicity. That's all you need. Once you've got these essentials, top-class image data and your own inspiration will guarantee good photos. Just follow your heart, open your eyes, and press the shutter.

The SD14.

The only camera with the potential for perfection.

The SIGMA SD 14: Specification



Foveon X3®
 a unique, groundbreaking
 direct image sensor.



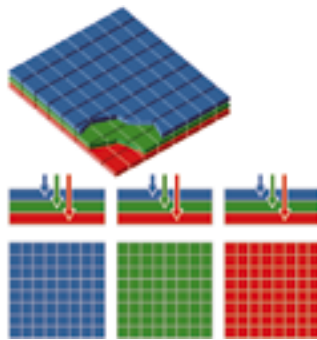
Most digital cameras use Bayer-filter image sensors, in which red, green and blue sensor elements are arranged in a mosaic pattern. Their fundamental drawback is that each pixel only captures a third of the color data, and the remaining two thirds have to be interpolated using complex algorithms.

Interpolation and artificial color synthesis result in a loss of detail, so, no matter how many extra pixels it has, a conventional image sensor can only record "higher quality" images by calculating and artificially synthesizing colors which were not present in the original data.

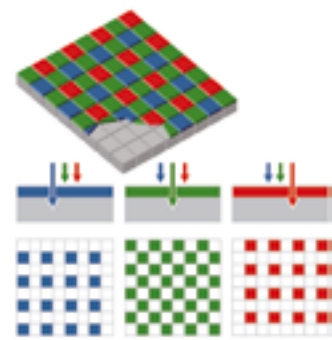
The SD14 features a Foveon X3® direct image sensor, which uses a full-color capture system recording the full complement of color data.

This radically innovative process delivers genuinely high image quality without any compromise at all.

"Foveon X3" is a registered trademark of Foveon, Inc.



The Foveon X3® Sensor
 Only the FOVEON X3® image sensor captures 100% of the R(red), G(green), and B (blue) light at every pixel location.



The Bayer-filter Image Sensor
 A conventional Bayer-filter image sensors capture only 25% of the R(red) and B(blue), and just 50% of the G(green).



In-camera JPEG Support

In-camera JPEG support for extra convenience in image data handling

The SD14 has an added JPEG mode, for greater convenience in handling image files.

In JPEG Super HI mode, images can be output as high-resolution 14-megapixel JPEG files using pixel interpolation.

There are four JPEG recording modes: Low, Medium, High and Super High. There is a choice of three JPEG quality settings: Basic, Normal and Fine.

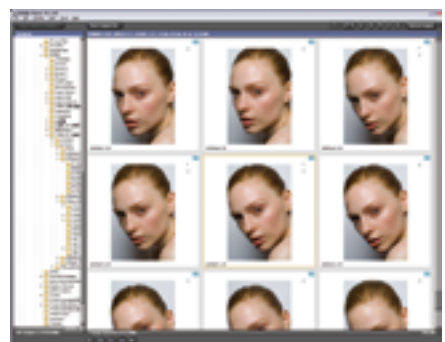
The quality - i.e. the pixel count - can be selected to suit the purpose: for example, Low would be best for an image to be emailed, and Super High for an image to be enlarged (for inkjet printing, it can be output at sizes up to 65cm by 43cm).

Sigma Photo Pro 3.0

Exclusive Sigma PhotoPro 3.0 software

Sigma PhotoPro 3.0 is an exclusive software package for displaying and manipulating your Sigma SD14 images on your computer. If you have artistic inclinations and are familiar with darkroom techniques, we particularly recommend Custom mode, which enables you to make delicate image adjustments.

This software offers a superb lineup of functions for drawing out the potential of the SD14's RAW data, with all the sensitivity you need to fine-tune your pictures. You'll never see digital SLRs in quite the same way again.





Dust Protector

Dust Protector supplied as standard

To highlight the importance of keeping the image sensor dust-free, a dust protector has always been supplied as standard with all SD series cameras. The dust protector prevents tiny particles of dust from adhering to the image sensor. In the SD14, it can be put in place or removed with a single action.

5-Point Distance-Measurement Autofocus

New 5-point distance-measurement sensor

We gave the SD14 a new 5-point distance-measurement autofocus sensor. Having carried out a thorough study based on our own unique perspective, we took the bold decision to measure the autofocus distance at five separate points - center, left, right, top and bottom - for maximum ease of use. The center point even has crosshairs for improved accuracy. There is a mode allowing

the user to select the points, and another mode in which the camera sets them automatically.

High-Eyepoint Viewfinder (Pentaprism 98% x 98%)

High-eyepoint viewfinder with top specs for both viewing angle and magnification



The Sigma viewfinder function, already acclaimed for its ease of focusing, has been improved even further in the SD14. The viewfinder - the heart and soul of any SLR - is a Pentaprism (Pentaprism

98% x 98%). Aiming for clear visibility, ease of focusing and other features, we gave the SD14 top-of-the-range specifications for both viewing angle and magnification.

2.5-inch LCD Screen

2.5-inch TFT LCD screen offers improved visibility for images and function menus

A 2.5-inch 150,000 pixels TFT LCD screen is built into the rear panel of the camera body to provide a high-resolution display of the captured image. The functions are now even easier to operate, thanks to the easy-to-use control-pad and the high-visibility LCD screen.

Built-in Flash

GN11 built-in flash

The SD14 has a built-in GN11 flash that comes into its own when used for indoor shots and outdoor portraits. Used in combination with the EF-500DG SUPER flash-gun (sold separately), it provides wireless flash capability.

Intuitive User Interface

Quick Set Button function

To make the controls intuitively obvious we gave the SD14 a Quick Set Button function. This allows you to display and adjust the most important settings, namely ISO, resolution, JPEG quality and file type, and white balance, on one screen, using one button. We've aimed for stress-free photography.

Easy-to-use Mirror-Lockup Function

The mirror-lockup function can be set easily

We gave the SD14 a mirror-lockup function, which first minimizes the vibration caused when the mirror springs up, and then opens the shutter. This reduces camera shake, which is a big help in macro shots and when shooting scenery with a super-telephoto lens. With the remote controller and cable release (both sold separately), vibration can be effectively eliminated.

The SIGMA SD 14: Specification



Full Lineup of Accessories



Power Grip PG-21

The specially-designed battery pack gives the Sigma SD14 enhanced battery power. Up to 2 dedicated batteries can be loaded at once. The grip is positioned lengthways, allowing for more comfortable handling.

Remote Controller RS-31

Using the remote controller, you can shoot with the camera positioned a considerable distance away, which makes it much easier to take self-portraits and family snaps. Used in combination with the mirror-lockup function, the remote control helps to minimize camera vibration.

It also comes in useful for macro shots, and scenery shots taken with a super-telephoto lens, where the slightest vibration can spoil everything.

Cable Release CR-21

The CR-21 Cable Release is an alternative to the RS-31 remote controller offering a wired connection to the camera. This reduces the risk of camera shake during photography.



AC Adapter SAC-2

This is used to provide a constant electricity supply when shooting in the studio, or taking indoor shots. It's also recommended for use when connecting the camera to your computer to transfer data.



Electronic Flashguns

EF-500 DG SUPER

Using the EF-500 DG Super high-powered autozoom flashgun enables you to take shots with S-TTL automatic flash metering. It has a high-speed synchro function which can also be used at high shutter speeds, and a wireless flash connectivity too. It's an accessory that opens up new expressive possibilities.

EF-500 DG ST

A high-powered autozoom flashgun. Featuring automatic flash-metering using S-TTL operation, you can take perfect flash shots effortlessly. This flashgun also includes autozoom and bounce head functions.

Accessories Provided with the SD14

- Battery Pack BP-21
- Battery Charger BC-21
- USB Cable • Video Cable
- Neck Strap • Eye Cap
- Body Cap • Eyepiece Cap
- SIGMA Photo Pro Disc
- Instruction Manual

Product external appearance, specifications, etc. may change without notice to allow for improvements.



Caution : To ensure the correct and safe use of the product, be sure to read the User's Manual Carefully prior to operation.

Copyright© 2006 Sigma Corporation All Rights Reserved.

SIGMA
www.SIGMA-SD14.com