

AUSTERE

Power Series Surge Suppressor User Guide/Owner's Manual

Model numbers: 3S-PS4-US1, 5S-PS4-US1, 7S-PS4-US1



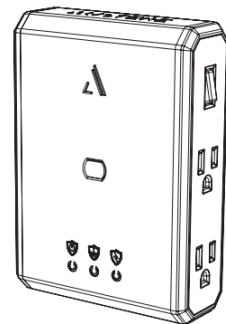
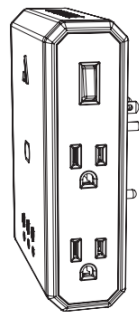
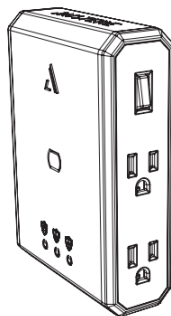
CAUTION To reduce the risk of electrical shock, only use the power surge protection indoors and in cool dry locations. DO NOT connect to an ungrounded outlet. DO NOT use with 2-wire extension cords or adapters or any type of extension cord into the power unit. DO NOT install power near any heat-emitting appliances such as radiators or heat registers. DO NOT install where excessive moisture is present. DO NOT drill into any part of the housing or open the housing for any reason. There are no user-serviceable parts inside. DO NOT plug into another relocatable power tap. DO NOT “daisy chain” surge protectors. DO NOT use with any aquarium equipment.

This product is recommended to be used with your home theater equipment, gaming systems, home office equipment, and portable electronic devices. It is not intended to be used with any medical equipment or life support devices. Do not use this equipment in the presence of a flammable anesthetic mixture with air, oxygen, or nitrous oxide.

Important: This device features internal protection that will disconnect the surge protective component at the end of its useful life but will maintain mains power to the surge protector – all connected devices are now unprotected. It is recommended to replace this unit every 5 years.

Product Registration

Prior to using your product and in order to activate the lifetime guarantee, please go to www.austere.com/guarantee and register your product.

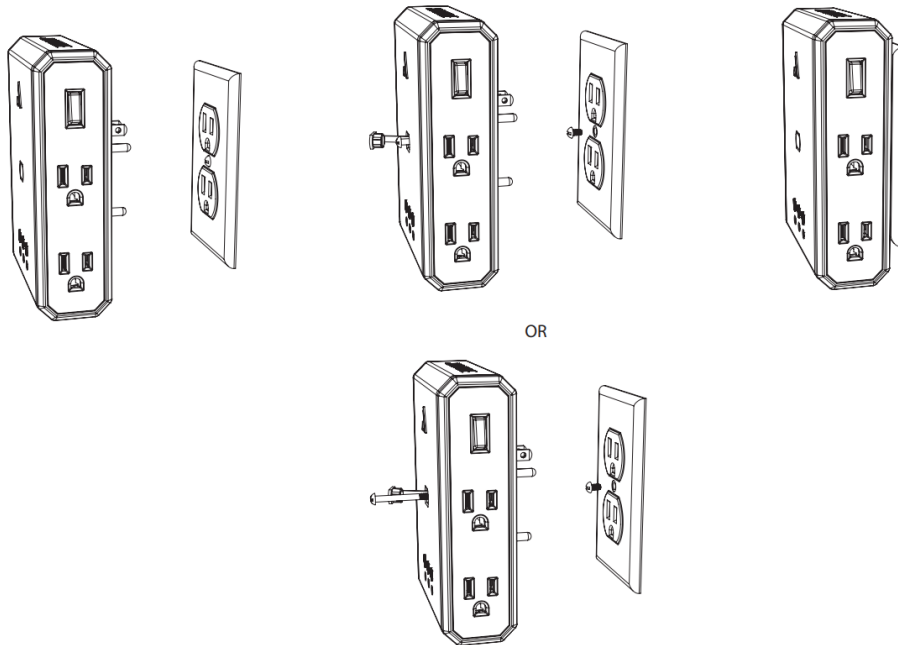


MOUNTING INSTRUCTIONS (OPTIONAL)

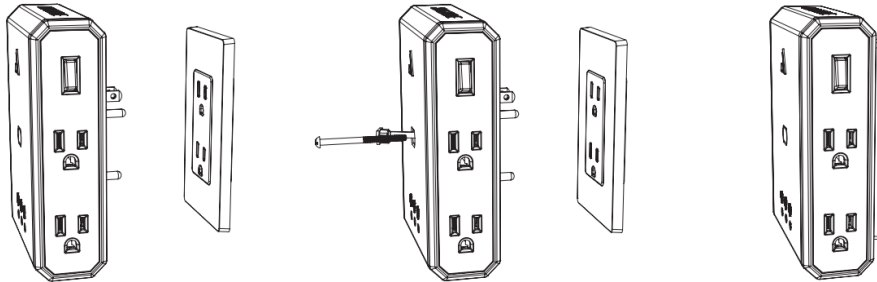
Austere 4-outlet power is wall mountable and includes a screw for attaching to the outlet (remove the center screw on the wall outlet and replace with Austere power).

Install Austere Power with optional security screw

1. Simply remove the existing center screw from the outlet cover while keeping the cover in place.
2. Open the removable flap on the front of the 4-outlet Power
3. Using a Philips head screwdriver and the silver screw included with Austere Power, turn the screw into the center of the outlet cover and plug in the unit, and re-position the cover flap on the Power unit.



For outlets without a center screw on the cover such as Decora outlets, simply open the removable cover on the front of Austere Power and remove the screw.



Plug in Austere Power to your AC Power Line: Be sure it is plugged into a standard, 3-wire grounded 120V AC, 60Hz outlet.

Turn your power unit ON: Press the power switch / reset button until the three LED indicator lights illuminate blue, indicating the unit is On and connected to AC input power. **Review the LED status indicator Lights:** Check the LEDs prior to connecting any of your equipment. They will indicate the optimum operating conditions of power when it is plugged into a 120V AC outlet.



Power LED: Will illuminate blue when lit. This indicates the surge protector is plugged in and receiving power



Ground LED: Will illuminate blue when lit. This indicates that the unit is plugged into a properly grounded circuit. If the Ground LED does not illuminate, there is something wrong with the electrical wiring to the AC outlet and we recommend having it inspected by a licensed and insured electrician.



Protected LED: Will illuminate blue when lit. This indicates that the surge suppression components are intact and providing full protection against surges. When the Protected LED no longer illuminates it is time to replace the unit.

Connect Your Equipment:

Plug your equipment's power cords into power AC outlets. All Austere power products feature expansive SmartFit outlets to accommodate your equipment's transformers without covering neighboring outlets. It is important to remember that you should NOT plug in extension cords directly into the power unit. DO NOT OVERLOAD the surge protector's outlets. The surge protector

can accommodate a total equipment load of up to 15 amps (whether plugged into a single outlet or spread out over multiple outlets). If the load on the surge protector exceeds 15 amps, the internal circuit breaker will trip and the outlets will stop providing power. If the circuit breaker trips, reduce the load by unplugging some devices. Reset by cycling the power button from On to Off and then On again. Repeat the process of unplugging a device to reduce the overall load until the unit remains On delivering power to all connected devices.

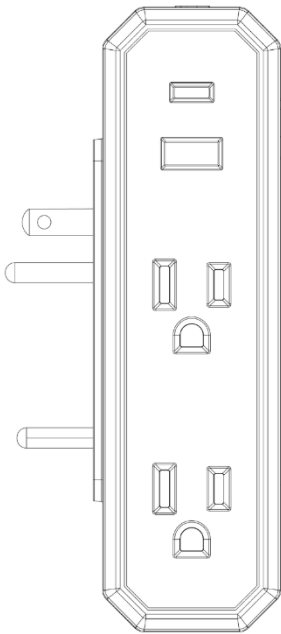
When plugged in, if the **ground** indicator LED does not light, move the power unit to a different grounded 3-prong AC outlet. If this symptom continues, your outlet may not be properly grounded and need to be repaired by a professional electrician.

If the **protected** LED does not light, the power unit's AC line is no longer protected from surges and the power unit must be replaced. If Austere Power continues to be used with the protected LED in the Off state any connected equipment will not be protected from future surges and spikes.

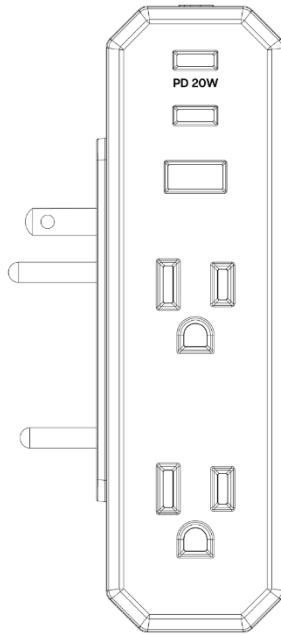
USB Charging Ports:

4-Outlet Power

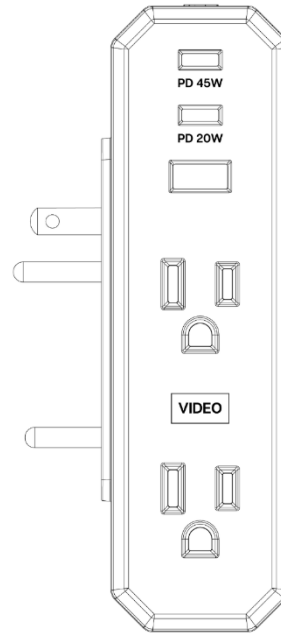
- The III Series 4-Outlet Power has two Omniport USB's 2.4A Shared, 1 USB-C, and 1 USB-A.
- The V Series 4-Outlet Power has three Omniport USB's: 1 USB-C PD 20W and 1 USB-C, 1 USB-A sharing 2.4A.
- The VII Series 4-Outlet Power has three Omniport USB's: 1 USB-C PD 45W, 1 USB-C PD 20W, and 1 USB-A with dedicated 2.4A. If both USB-C ports are used, the PD 45W is shared.



Austere III Series Power 4-Outlet



Austere V Series Power 4-Outlet



Austere VII Series Power 4-Outlet

Specifications:

- Electrical Rating: 120 Volts AC/15A/1800W
- Maximum Peak Current: 15A
- Surge Protection:
 - III Series 3S-PS4-US1 has 2500 joules
 - V Series 5S-PS4-US1, have 3000 joules
 - VII Series 7S-PS4-US1 have 3500 joules

4-outlet Certifications

FCC Compliance Statement

This device complies with part 15 of the FCC rules. Operation is subject to the following two conditions: (1) this device may not cause harmful interference, and (2) this device must accept any interference received, including interference that may cause undesired operation.

Energy Efficiency:

- California Energy Commission's Appliance Regulations (CEC-400-2017-002: Section 1601-1608 of Title 20 of the California Code of Regulations)
- US Department of Energy, 10 CFR Part 429

EMC Compliance:

FCC Part 15 Subpart B, Class B: 2020 and ANSI C63.4; 2014

Electrical Safety United States:

- UL 1310: 2018 Ed. 7 + R:16 Aug 2019
- UL 498A:2008 Ed.2 + R:29 Oct 2022
- UL 1449:2021 Ed.5
- CSA 22.2 #223: 2015 Ed. 3
- CSA 22.2#42: 2010 Ed.7+U1;U2;U3;U4
- CSA 22.2#269.3:2017 Ed. 2

Technical Support: Please contact our technical support team with installation questions, troubleshooting needs, or general product questions.

- Phone: 1-855-672-0684
- Email: [support@austere.com](mailto:support@ austere.com)

Lifetime Guarantee latest document applies on Austere.com.



2022 Austere. All rights reserved. Austere and More Than Expected are trademarks of Austere or its affiliates. All other trademarks are the property of their respective owners.