

WALL CHARGER CAMERA WITH WIFI HIDDEN

CAMERA

SKU: HCWiFiAdapter



**USER MANUAL
FCC CE**

THANK YOU FOR PURCHASING THE HCWIFIADAPTER

Please read this manual before operating the HCWiFiAdapter and keep it handy.

Your purchase should include:

- 1 x HCWiFiAdapter
- 1 x MicroSD Card Reader
- 1 x Reset Pin
- 1 x Manual

Contact **770-694-6921** if you are missing any of these components.

GET FAMILIAR WITH YOUR HCWIFIADAPTER





OPERATING THE HCWIFIADAPTER

BEFORE YOU START

- In order to view the live stream remotely, you must first download the LookCamPro App onto your smartphone. It is available on the iPhone App Store and Google Play.
- This device can only make one Wi-Fi pairing attempt, and then the TUT signal will disappear. If the pairing process is unsuccessful the device will be required to be sent in for a factory reset. Please verify the name of your router's Wi-Fi signal and password, and follow the steps on the next page to ensure your device has the best chance possible of pairing with your router.
- This device will only connect to routers that produce a 2.4GHz signal. Please

contact your internet service provider to determine if your router is 2.4GHz or 5.8GHz.

- If your wireless network has a password using any special characters, please change it so it is using only numbers/letters.
- Turn off your phone's mobile data prior to connecting to the device's Wi-Fi signal. Some phones will ignore Wi-Fi connections that do not have internet access if mobile data is enabled.
- If you wish to record onto a MicroSD Card, you must insert one into the MicroSD card slot in the back of the device.

CONNECTING TO YOUR DEVICE

1. Plug the adapter into a wall outlet, and make sure the blue LED light turns on.

2. Turn on your phone's Wi-Fi and look for the Wi-Fi signal generated by the device. It may take up to 5 minutes for the Wi-Fi to be generated.
 - a. The Wi-Fi signal name will match the UID sticker on your device, ex. "TUTxxxxxxx". The x's will be a string of random numbers unique to your device.
3. Once the device generates its Wi-Fi signal, connect to it via the Wi-Fi settings on your phone.
 - a. *NOTE: Some Android devices may produce a warning that the network has no internet access. If you see this, choose to connect to the network anyway.*
4. After connecting to the Wi-Fi signal with your mobile device, open the LookCamPro App.

- a. *NOTE: For iOS devices, you must wait until the Wi-Fi signal appears next to your Phone Carrier Name in the status bar at the top of your phone screen.*
5. The app will automatically detect the camera, and display an “AP added device, whether the network?” message. Select “Sure”.
6. The app will take you to a new screen to select the network you wish to pair the device with.
7. Put in the password for the desired network and press “Sure”. The camera will reboot and should come back online within 5 minutes.
 - a. *NOTE: Please follow the tips on pages 5 and 6 to ensure a proper connection is formed between your device and the router.*

Note: You will be prompted to change the device password the first time you view the camera video feed. We suggest that you do change this to prevent any unauthorized viewing of your camera. The default password is 6666.

IMPORTANT: You must keep this password in a safe place. If you ever need to access the camera from a different phone or reinstall the camera app, this password will be required to re-add the camera. If you forget the password, a factory reset will be required. In order to factory reset the device, it will most likely need to be sent to us via an RMA (return merchandise authorization). If you have any questions regarding this, please call us at 770-694-6921.

HOW TO CONNECT DEVICE TO YOUR WIFI

1. Open the LookCamPro application on your smartphone or tablet.
 2. Press the settings wheel on the far right.
 - This is the ⚙ icon.
 3. You will be taken to a screen the multiple options. Select the “Record” option. Options will be explained below.
 - **Note:** *On iOS devices, this will be the “SD Card Setting” option.*
- **Record Length** – This controls the length of your video recordings and can be set between 5 and 30 minutes. (**Note:** *This only controls the video length for the ‘Throughout the Video’ and ‘Timing Video’ video modes. For controlling video length on the ‘Alarm Video’ video mode, please refer to Step 3)*

- **Video Stream** – This controls what resolution your unit records videos at. (*Note: These devices can currently only record in 720P*)
- **Video Mode** – This controls how the device captures videos.
 - **Stop Video** – The unit will not record any videos to the microSD card.
 - **Throughout the Video** – The unit will record continuously 24/7 to the microSD card
 - **Alarm Video** – The unit will record to the microSD card only when there is motion (*Note: Make sure to follow Step Three for enabling motion detection*)
 - **Timing Video** – The unit will record continuously 24/7 to the microSD card only between the specified

start and end times (time is in military format)


- **Record Audio** – Enable/disable this for audio along with video recording.
- **Video Coverage** – Enable/disable this for loop recording (when the microSD card fills up, the oldest video will be deleted to make room for a new one)

STEP THREE – SETTING YOUR DEVICE UP TO DETECT MOTION

Note: *If you do not want to record to the microSD card based off motion, or do not want to receive motion detection alerts on your phone, you can skip this entire section.*

SETTING UP MOTION DETECTION

1. Open the LookCamPro application on your smartphone or tablet.
2. Press the settings wheel on the far right


- This is the  icon
- 3. You will be taken to a screen with multiple options. Select the 'Alarm' option. Options will be explained below.
 - **Note:** *On iOS devices, this will be the 'Alarm Setting' option.*
- **Motion Detection Switch** – Enable this if you have your device's Video Mode set to 'Alarm Video'.
 - **Note:** *This is required to be enabled if you want to receive motion notifications, or to record when there is motion.*
- **Alarm Push** – Enable this if you want to receive alerts on your phone when the device detects motion.
- **Mobile Detection Video** – This feature will not apply to your device and can be on or off.

- **Alarm Recording Time(s)** – This is how long of a video clip will be taken when motion is detected. This can be set between 10 and 60 seconds.
 - **Note:** *If motion is detected after the first recording begins, another one will begin, and so on.*
- **Alarm Delay** – This is how long the app will wait in between sending alarm notifications to your phone.
 - **Note:** *If it is set to 30 and there is motion, you will only receive alerts every 30 seconds*
- **Detection Sensitivity** – This controls how sensitive the unit is to detecting motion. You will want to test the device to see which option is best suited for the environment your device is in.

STEP FOUR – CHANGING THE DEFAULT DEVICE PASSWORD

Note: For security purposes, we strongly recommend that you change your device's default password from 6666. If you change your device's password, make sure to store the password securely. If you ever need to re-install the application or add the device to another phone, you will need the new password.

CHANGING YOUR DEVICE'S PASSWORD

1. Open the LookCamPro App.
2. Press the settings wheel on the far right
 - This is the  icon
3. You will be taken to a screen with multiple options. Select the 'User' option.
 - **Note:** On iOS devices, this will be the 'User Setting' option.


4. On the next screen, put in 6666 for the 'Old pwd' field
5. Put in your desired password in both the 'New pwd' and 'New pwd again' fields, and then select 'Done'.
 - **Note:** *Your password must be between 4 and 31 digits.*
 - **Note:** *It is highly recommended you enable the 'show password' option to reveal your text as it is typed. This will help avoid any potential typos in the password.*

LIVESTREAMING YOUR DEVICE

Note: *If your device has not been paired with a router, you will need to connect your smartphone or tablet to the device's wi-fi signal.*

Note: *If this is the first time opening the live stream, you will be prompted to change the device password. We suggest that you do change this to prevent any unauthorized viewing of your camera. The default password is 6666.*

Note: *This requires you to have completed Step One.*

1. Open the LookCamPro application
 2. Tap your finger on your device listing and the live stream should open.
Options will be explained below.
- **Top Left**  **Icon** – This will mirror the live stream vertically. This also affects video orientation for video recordings.

- **2nd Top Left ↔ Icon** – This will mirror the live stream horizontally. This also affects video orientation for video recordings.
- **Light Bulb Icon** – This will enable/disable the working wi-fi LED light on your unit (blue LED).
- **☾ Icon** – Controls night vision.
 - **Note:** *This option is not applicable to all units because not all units have night vision, but they use the same application.*
- **T Icon** – This icon will not apply to your device. Can be on/off.
- **2K Icon** – This allows you to choose your live streaming resolution. You can choose between: 720P, 1080P, 2K, and 4k
- **'Video' Camera Icon** – This will start a video recording while in the live stream and save it to the app on your phone.

- **Note:** This does not save video to the microSD card, that is controlled separately.
- **'Photo' Camera Icon** – This will take a snapshot of the live stream and save it to the app on your phone.
 - **Note:** *This does not save the snapshot to the microSD card*
- **'Hold to Talk' Microphone Icon** – This button **does not apply** to your device because it does not come equipped with a two-way microphone.
- **'Audio' Speaker Icon** – This will enable you to listen to the audio while viewing the live stream.
 - **Note:** *Some phones may require you to turn the volume up after enabling this*
- **Bottom Right ↔ Icon** – This will allow you to adjust settings for the live stream, such

as brightness and contrast levels (these range between 0 and 100)

- **Note:** *The 'Horn' and 'Microphone' sliders will not apply to your device.*

REVIEWING VIDEOS VIA THE LOOKCAMPRO APPLICATION

Note: *This requires you to have completed Step One.*

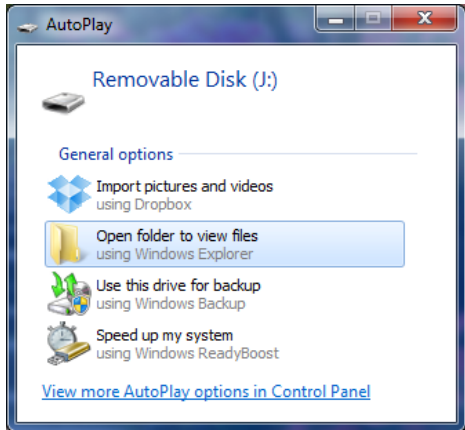
1. Open the LookCamPro application and you will see four tabs at the bottom of the main menu: Camera, Photo, Video, and Playback. These will be explained below.
 - **Note:** *If you do not see these four tabs, please press the ≡ icon in the top left corner once.*
- **Reviewing Photos Taken in Live Stream –**
Select the 'Photo' tab and then choose your

device. You can then review photos taken during the live stream.

- **Reviewing Videos Taken in Live Stream** – Select the ‘Video’ tab and then choose your device. You can then review videos taken during the live stream.
- **Reviewing Videos Recorded to the MicroSD Card** – Select the ‘Playback’ tab and then choose your device. Select the date you wish to review video files for.
 - **Note:** *To delete recordings from the microSD card, hold your finger down on the video selection, and when it asks ‘Are you sure to delete?’, choose ‘Sure’*

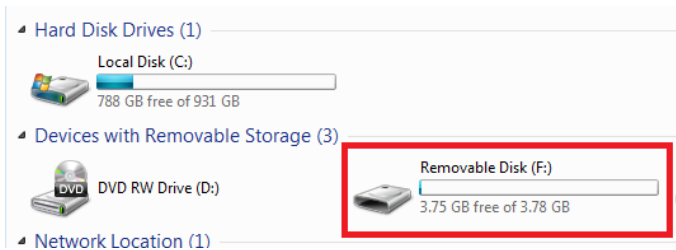
TRANSFER THE FILES TO YOUR PC

1. Unplug the device from the electrical outlet, then retrieve the Micro SD card from your device (see page 3).
2. Use the Micro SD Card Reader to connect the SD card to your computer.
3. Locate “Removable Disk” inside the (My) Computer folder.
 - AutoPlay Removable Disk > Open folder to view files



Or...

- Go to Start > Computer > Removable Disk



4. Open the Removable Disk drive.
5. Open the VIDEO folder containing the files.
6. Double click the file you want to view.

TROUBLESHOOTING

HOW TO RESET THE DEVICE

- Unplug the device and plug it back in.

WHEN I PLAY BACK VIDEO I ONLY HEAR AUDIO AND SEE NO VIDEO

- Download VLC media player and open the file with VLC.

OTHER PROBLEMS

- Call our technical support at **770-694-6921**

MiniGadgets, Inc.

MiniGadgets, Inc.

SPECIFICATIONS

Video Resolution	1080P, 720P, 640P
Video Format	AVI
Type of Memory	External Micro SD Card Up to 32GB
Recording Capacity	1GB ~ 10 mins
USB Interface	2.0 USB
Player Software	VLC
Time Date Stamp	Yes
Loop Recording	Yes
Operating Systems	Windows XP & Up Mac OSX 10.5 & Up Linux