

1080P Mini Cube Hidden Camera SKU: HCNVMiniCube



USER MANUAL
FCC CE

1

Thank you for purchasing the HCNVMiniCube!

Please read this manual before operating the device, and keep it handy.

Your purchase should include:

- 1 x HCNVMiniCube
- 1 x Alligator Clip
- 1 x Mount
- 1 x Charging Cable

Contact **770-694-6921** if you are missing any of these components.

2

Get familiar with your device!



3

Get familiar with your device!



4

recording, the device will stop unless further movement is detected. The device will save videos in 5-minute intervals.

4. To turn off motion detection mode, short-press the Power Button once more.

In 1080P Resolution:

1. Power on the device, and wait until the blue LED is lit.
2. Short-press the Mode Button once.
3. Press and hold the Mode Button for 3 seconds. The LED will flash blue/red 3 times, and the device is now in motion detection mode.

NOTE: The rest of the motion detection mode in 1080P is the same as in 720P.

13

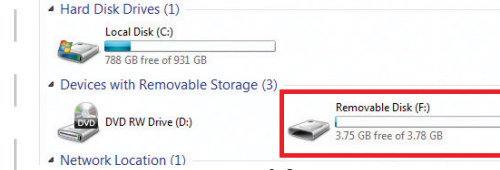
How to Set the Time and Date

Stamp

Make sure the device is powered off, then safely remove the MicroSD card from the slot (see previous page).

1. Connect your MicroSD card to your computer via a MicroSD card reader.

2. Locate the "Removable Disk" inside the



14

(My) Computer folder. (Start > Computer > Removable Disk) (see graphic) Or...

The device will automatically pop up on your screen when you plug it in. (AutoPlay > Removable Disk > Open folder to view files) (see next page)

3. Inside the Removable Disk folder, there will be a txt document labeled "TIMEREST.txt". Double-click on it to open it.

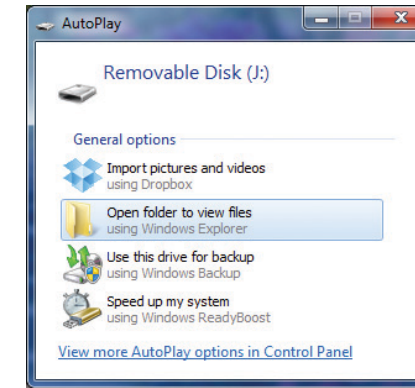
4. Enter the current time and date in the format as shown on page 17.

5. Replace the "N" at the end of the sequence with a "Y".

6. Save the changes to your txt document,

15

then exit out of the Removable Disk. Safely eject the MicroSD card and perform a safety recording to ensure the time/date stamp was



16

Get familiar with your device!



- a. Camera Lens, b. Night Vision LEDs, c. Reset Port, d. Charging Port, e. MicroSD Card Slot, f. Mode Button, g. LED Indicator Light, h. Power Button, i. Clip Knotches, j. Cube Mount Attachments, k. Alligator Clip Release

5

How to Charge Your Device

1. Plug the charging cable into the Charging Port on your device.
2. Plug the other end of the charging cable into a USB port on your computer or into an AC wall charger (not provided).
3. The LED Indicator light will flash red while the device is charging. Once the device is fully charged, the LED light will stay solid red (about 3 hours).
4. You can also continuously power the device by keeping it plugged in to a functioning power source.

6

How to Record Video

Please allow the device to charge 2-3 hours before first use.

In 720P Resolution:

1. Press the Power Button for 2 seconds to power on the device.
2. When the LED indicator light is solid blue, short-press the Power Button to begin recording. The blue LED will flash 3 times, then turn off. The device is now recording (no LED lights will be active during recording).
3. To stop recording, short-press the Power Button once more. The LED will stay solid blue, and the device has quit recording and saved your video.

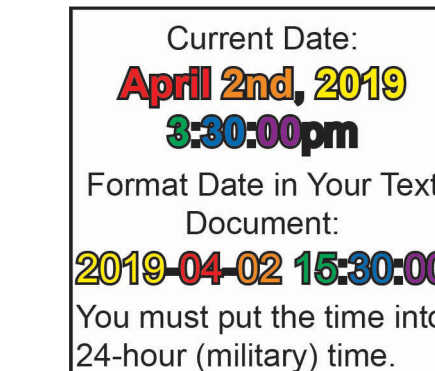
7

In 1080P Resolution:

1. Power on the device by pressing the Power Button for 2 seconds.
2. When the LED indicator light is solid blue, short-press the Mode Button. The LED will turn from blue to blue-red.
3. Short-press the Power Button to start recording. The LED will flash blue and red 3 times, then turn off. The device is now recording (no LED lights will be active during recording).
4. To stop recording, short-press the Power Button once more. The device has quit recording and saved your video.

NOTE: The device will save videos in 5-minute

8



successfully set.

17

How to Retrieve Files to Your PC

Solution 2: If you are charging through a wall power source, you may need to charge through the computer.

Problem: The device starts to record, then turns off.

Solution: When the battery is low, the device will automatically save the video, then power off to conserve battery. Please charge the device.

Problem: My computer doesn't recognize the device.

Solution 1: Unplug the device from your PC and reboot your PC.

21

Make sure your device is turned off, then remove the MicroSD card from it.

1. Connect the MicroSD card to your computer via a MicroSD card reader.
2. Open the Removable Disk drive like you did when setting the Time/Date stamp.
3. Your video and photo files are located in the Removable Disk drive. We recommend saving them to your computer or laptop before trying to view your files.

Copying and Deleting Your Files

The video and photo files created on the MicroSD card are just like any other file on your computer, and can be managed in the

18

Solution 2: Try using a different USB slot on your PC.

Problem: The sound or video is unclear.

Solution 1: The device needs charging. Please charge your device.

Solution 2: Make sure you are using the recommended VLC Player software.

Problem: I need to reset the device.

Solution: Turn on your camera, and wait until the LED is lighting. Take a small object (like a paperclip), and insert the paperclip into the Reset Port (see previous page). When the blue light turns off, the reset has been

22

exact same manner.

To save a file(s), select the file(s), right click your mouse on the file(s) name, then choose "Cut" from the menu. Then go to the location you wish to save the file(s) to, right click your mouse, and select "Paste" from the menu. This will **save the file(s)** to your computer/the location you chose.

To delete a file(s), select the file(s), right click your mouse, and choose "Delete" from the menu. This will **permanently delete the file(s)** from the location.

If you are using MAC OS, you must **empty the trashcan** after you delete a file. Otherwise, the SD card will fill with hidden

19

completed, and you may now turn on the camera once more.

Other problems: Please call our technical support at **770-694-6921**.

23

files, and the device can no longer record new files.

Troubleshooting

Problem: The device won't turn on.

Solution 1: Charge the device for at least 2 hours before the first use.

Solution 2: Make sure the charging cable is securely inserted into the device and into the power source while charging.

Problem: The device isn't charging.

Solution 1: Replace the charging cable or the AC adapter.

20

Specifications

| | |
|-------------------|---|
| Video Resolution | 1920x1080P, 1280x720P |
| Video Format | AVI |
| Frames per Second | 30 |
| Image Resolution | 12MP (4032x3024) |
| Time/Date Stamp | Yes |
| Loop Recording | Yes |
| Battery Life | About 100 Minutes |
| Type of Memory | External MicroSD Card |
| Memory Capacity | Up to 32GB |
| USB Interface | 2.0 USB |
| Player Software | VLC |
| Operating Systems | Windows XP & Up Mac OSX 10.5 & Up Linux |

intervals during both recording resolution modes.

How to Take Photos

1. Power on the device by pressing and holding the Power Button for 2 seconds.
2. To switch to photo mode, short-press the Mode Button twice. The LED will flash blue then red, then it will stay red.
3. Short-press the Power Button once to take one photo.

How to Power Off Your Device

1. To power off the camera, make sure the device is not recording video.

9

How to Use Night Vision

NOTE: You can record in night vision in both 720P and 1080P.

In 720P Resolution:

1. Power on the device, and wait until the blue LED indicator light is on.
2. Short-press the Mode Button twice to enter Photo Mode, and the light will flash before turning solid.
3. Press and hold the Power Button for 2 seconds. The LED will flash red twice, and you are now in night vision mode. The device

10

will automatically be recording when the LEDs turn off.

4. When you want to stop recording, short-press the Power Button.

In 1080P Resolution:

1. Power on your device, then wait until the blue LED is lit.
2. Short-press the Mode Button twice.
3. Press and hold the Power Button for 2 seconds. The red LED will flash twice, and you are now in night vision mode.
4. Short-press the Power Button to begin recording. There will be no LED lights when recording.
5. Short-press the Power Button once more

11

to stop recording.

How to Use Motion Detection

NOTE: You can use motion detection mode in both 720P and 1080P resolution.

In 720P Resolution:

1. Power on the device, and wait until the blue LED is lit.
2. Press and hold the Mode Button for 3 seconds, and the LED light will flash blue/red 3 times. The unit is now in motion detection mode, and there will be no LED light while waiting for movement.

NOTE: Once the device detects movement, it will begin recording. After 1 minute of

12