

iCON

MicU Solo

1 Mic-In / 1 Guitar-In, 2-Out Professional vocal
recording USB Interface



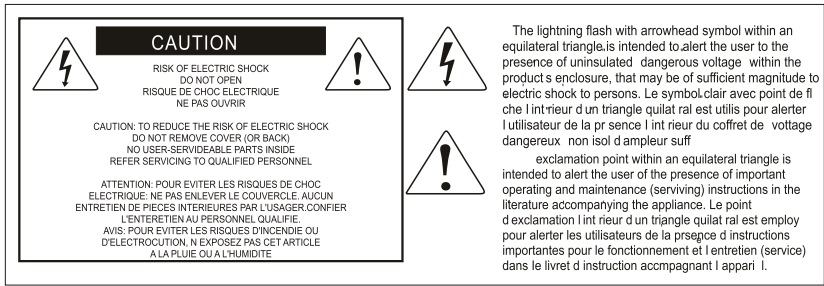
User manual



CE FC



N1630



Important Safety Instructions

1. Read this manual thoroughly before using this unit.
2. Keep this manual for future reference.
3. Take notice of and comply with all warnings included in the user's manual or indicated on the appliance.
4. Follow all instructions included in this manual.
5. Do not expose this unit to rain or moisture. Avoid having water or other liquids spilled on this unit.
6. When cleaning the cabinet or other parts of this appliance, use only a dry or slightly damp soft cloth.
7. Do not block any ventilation openings or interfere with the proper ventilation of this unit. Install in accordance with the manufacturer's instructions.
8. Do not use or store near any heat sources such as radiators, heat registers, stoves, or other heat-producing appliances.
9. Do not interfere with the safety purpose of the polarized or grounding-type plug. A polarized plug has two blades with one wider than the other. A grounding-type plug has two blades and a third grounding prong. These are designated for your safety. If the provided plug does not fit into your outlet, consult an electrician.
10. Protect the power cord from being walked on or otherwise damaged by items placed on or against them. Particular attention should be given to the plugs, receptacles, and the point where the cord exits the appliance.
11. To avoid the risk of electrical shock, do not touch any exposed wiring while the unit is in operation.
12. Only use attachments/accessories specified by the manufacturer.
13. Unplug this unit and all connected electrical equipment during lightning storms or when left unused a long period of time.
14. Refer all servicing to qualified service personnel. Servicing is required when the appliance has been damaged in any way or fails to operate normally.

WARNING: To reduce the risk of fire or electric shock, do not expose this unit to rain or moisture

Contents

Introduction.....	4
What's in the package?	4
Features	5
Front/Top Panel	6
Rear Panel.....	7
Mac driver installation.....	8
Software control panel.....	10
Windows driver installation.....	11
Software control panel.....	14
Software control panel (continued).....	15
Hardware Connections.....	18
Minimum System Requirements.....	19
Specifications	20
Services.....	21

Introduction

Thank you for purchasing the ICON MicU Solo digital audio Interface. We sincerely trust this product will provide years of satisfactory service, but if anything is not to your complete satisfaction, we will endeavor to make things right.

In these pages, you'll find a detailed description of the features of the MicU Solo digital audio interface, as well as a guided tour through its front and rear panels, step-by-step instructions for their setup and use, and full specifications.

You'll also find a warranty card enclosed---please don't forget to fill it out and mail it so that you can receive online technical support at: www.iconglobal.com. And so we can send you updated information about this and other ICON products in the future. As with most electronic devices, we strongly recommend you retain the original packaging. In the unlikely event the product must be returned for servicing, the original packaging (or reasonable equivalent) is required.

With proper care and adequate air circulation, your MicU Solo digital audio interface will operate without any trouble for many years. We recommend that you record your serial number in the space provided below for future reference.

Please write your serial number here for future reference:

Purchased at:

Date of purchase:

What's in the package?

- MicU Solo USB Recording Interface
- Quick Start Guide
- Driver Software CD
 - Difference languages electronic user manual & quick start guide (pdf)
- USB cable

Features

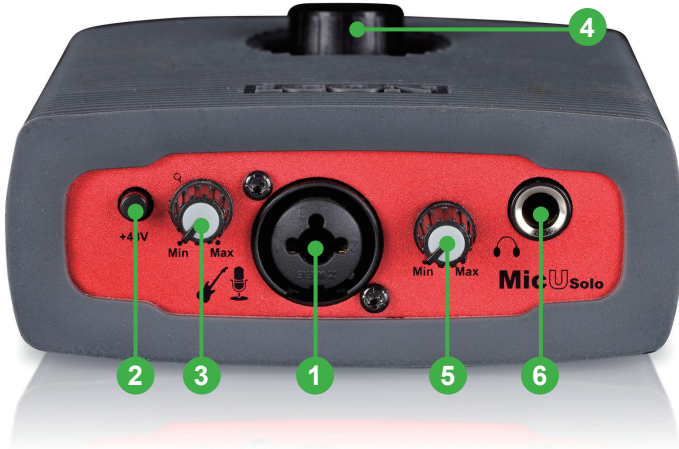


The ICON MicU Solo USB recording interface provides an audio input and output module with USB connectivity. Main features include:

- 24-Bit 96/192KHz 1 mic-In/1 guitar-In, 2-Out USB Recording Interface
- 2x2 analog I/O full duplex recording and playback
- ICON innovative unique mic preamp with individual gain control and phantom power switch
- ICON innovative unique guitar preamp with individual gain control.
- 2 analog outputs on 1/4" TRS jacks or stereo output on 3.5mm phone connector.
- Master volume control on the top panel
- 1 headphone output with assignable source and individual volume control
- Flexible channel routing via the software control panel
- USB2.0 High Speed equipped and USB bus-powered
- Supports DirectSound, WDM and ASIO2.0
- Compatible with Mac OS (Intel-Mac) and Windows XP, Vista (32-bit/64-bit) & Windows 7 (32-bit/64-bit)
- Full duplex, simultaneous record/playback
- Rugged metal construction with rubber jacket

Front/Top Panel

MicU Solo



1. “Mic/Inst” inputs 1/2

Unbalanced instrument and mic level input. This hybrid connector will accept a standard 3-pin XLR plug or a 1/4” TS connector.

2. 48V phantom power switch

Press to supply +48V phantom power to the associated XLR input. This phantom power circuit is suitable for most condenser microphones.

3. Input gain level controls 1/2

This potentiometer controls the input level of the analog microphone/Guitar input.

4. Master level control

This potentiometer controls the master output level of the analog outputs.

5. Headphone level control

This potentiometer controls the output level of the headphone output.

6. Headphone output

This output jack accepts a standard 1/4” stereo TRS headphone connector.

Rear Panel



1. USB 2.0 Connector

Connect it with the provided USB cable to your Mac/PC's USB connector. Your Mac/PC must have a USB2.0 connector in order to run the full speed of MicU Solo.

2. 3.5mm stereo output

This is an unbalanced analog stereo output on a standard 3.5mm stereo connector at +6dBu line level.

3. Line outputs 1/2

These are unbalanced analog outputs on standard 1/4" TS connectors at +6dBu line level.

Mac driver installation

Please follow the step-by-step procedures below to install your MicU Solo USB recording interface and its driver.

1. Turn on your Mac

Note: Do not connect the MicU Solo digital audio interface to your Mac yet

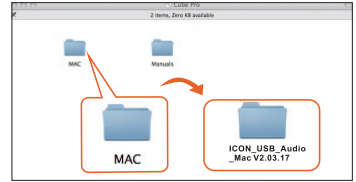


Diagram 1

2. Insert the provided driver CD into your CD-Rom.

After you have inserted the provided Driver CD into your CD-Rom, a popup window should appear as shown in Diagram 2, then click on the "Mac" folder to open the installation files list. Click "ICON_MicU Solo.mpkg"

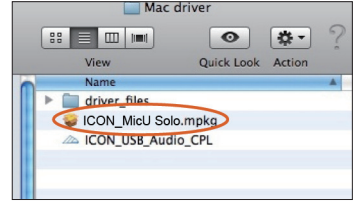


Diagram 2

3. Welcome Screen appears

Choose "Continue" when you see the Welcome Screen shown in Diagram 3



Diagram 3

4. Set install location

Click the "Change install location" button if you would like to set your preferred install location, otherwise click the "Install" button.

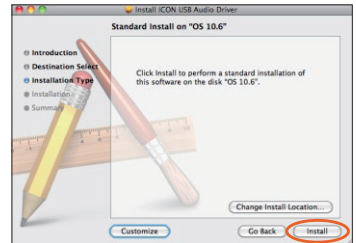


Diagram 4

5. Installation start

The driver installation has started, please wait until the process has completed.

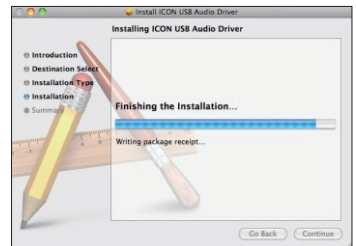


Diagram 5

6. Installation completed

The driver installation has completed successfully. Click the “Close” button.

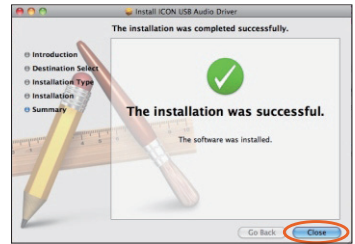


Diagram 6

7. Copy the software control panel shortcut logo to your desktop

Open the previous “Mac” folder. Copy the “MicU Solo” software panel shortcut logo and paste it to your desktop.

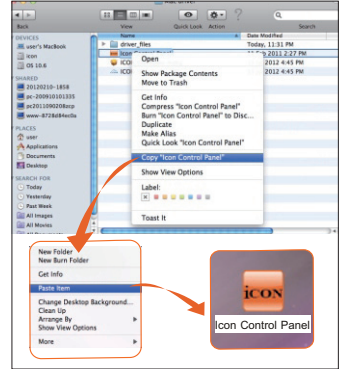


Diagram 7

8. Launch the software control panel

Click the MicU Solo's software control panel shortcut logo you have just copied to your desktop to launch the software control panel.

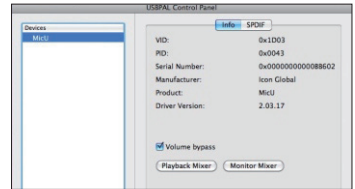


Diagram 8

9. Audio MIDI setup

Open the “Audio MIDI setup” window and check if the MicU Solo device has setup properly as shown below in diagram 9. If your MicU Solo device does not appear on the system settings. It means the driver did not install properly, go through the “Driver Installation” procedure again.

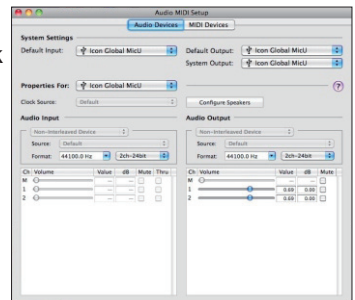


Diagram 9

Software control panel

The “Playback” and “Monitor” mixers work like a matrix mixer. Activate and adjust the correspondence input or output channel level. They are very useful and make your inputs and outputs very flexible. You may route any of your input(s) to any output(s).

Playback Mixer

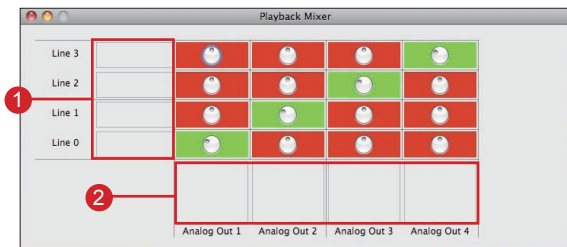


Diagram 10

1. Software outputs level metering

Ch 1,2 output level metering

Showing the input level for the software input channel.

2. Hardware outputs level metering

Ch 1,2 output level metering

Showing the output level for the hardware output channel.

Monitor Mixer

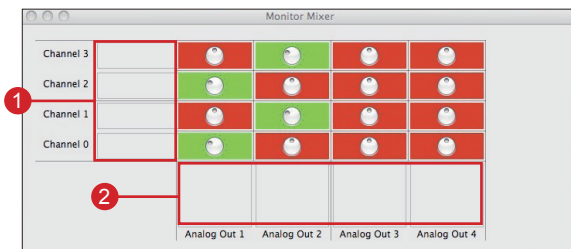


Diagram 11

1. Hardware inputs level metering

Ch 1,2 input level metering

Showing the input level for the hardware input channel.

2. Hardware outputs level metering

Ch 1,2 output level metering

Showing the output level for the hardware output channel.

Windows driver installation

Please follow the step-by-step procedures below to install your MicU Solo USB recording interface and its driver.

1. Turn on your computer

Note: Do not connect the MicU Solo digital audio interface to your computer yet

2. Insert the Driver CD into your CD-Rom.

After you have inserted the provided Driver CD into your CD-Rom, an Installation screen should appear as shown in Diagram 12, then click "Windows Driver" for the driver installation"

Note: If the Installation screen do not appear automatically. Go to the CD folder and double click "Setup"



Diagram 12

3. Installation Wizard appear

Choose "Next" when you see the Welcome Screen as Diagram 13 shown

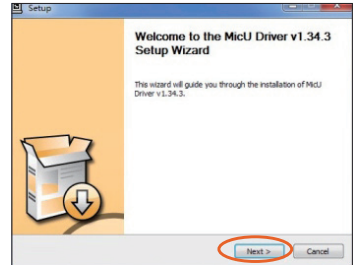


Diagram 13

4. License Agreement

Check mark the "I accept the terms of the License Agreement" and click "Next".

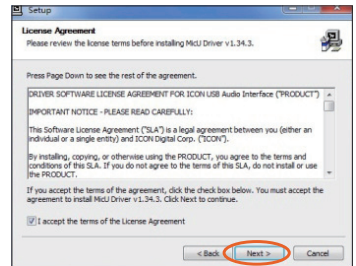


Diagram 14

5. Confirm driver installation

A confirmation on the driver installation screen will appear, click "Next".

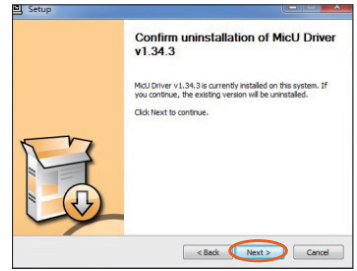


Diagram 15

6. Driver setup

Driver setup Choose the location of the driver and click "Next" as shown in Diagram 16

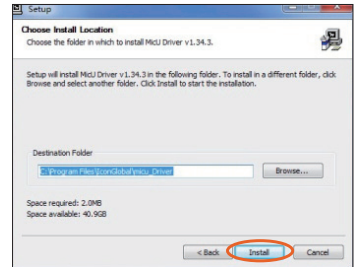


Diagram 16

7. Installation start

The installation process has started, the process may take some time depending on your computer performance, please be patient and wait for the process to finish.

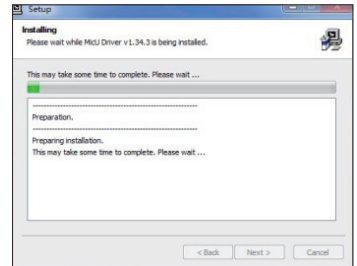


Diagram 17

8. Software installation window

A window as shown in Diagram 18 should appear. Choose "Install this driver software anyway"

Note: *Although this message appears, the MicU Solo driver is fully tested and supports Windows XP, Vista & Windows 7*

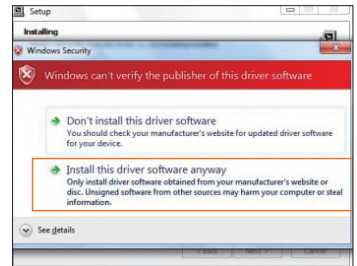


Diagram 18

9. Setup completed

A window as shown in Diagram 19 should appear. Choose "Next".

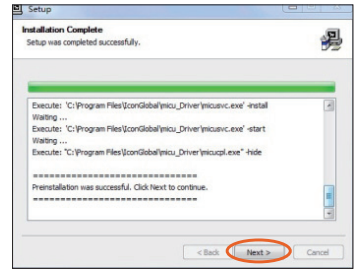


Diagram 19

10. Connect your MicU Solo digital audio interface

Now connect the MicU Solo digital audio interface to your computer's USB port and click "Finish".

Note: MicU Solo audio interfaces only support USB 2.0. Your computer must have an USB2.0 port.



Diagram 20

11. Installing device driver software

The MicU Solo driver is installing

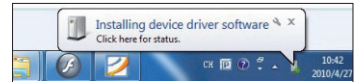


Diagram 21

12. Driver installation completed

MicU Solo driver installation has completed and is ready to use.

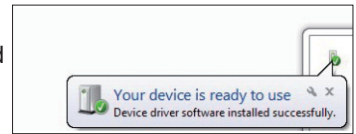


Diagram 22

13. Launch the software control panel

You may click the MicU Solo logo on the system tray to launch the software control panel (Page 14).



Diagram 23

Software control panel

1. Sample rate settings

Select your desired sampling rate from 44.1KHz to 192KHz on the pull down window shown in Diagram 24. Click "Apply" after the selection has been made to set the value.

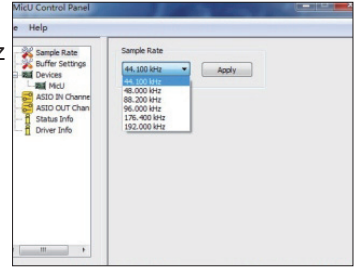


Diagram 24

2. Buffer Size settings

You may select the buffer size for "Streaming" and "ASIO". Click "Apply" after you have made the selections.

Note: *If a clicking sound occurs, you should change to a larger buffer size for the settings. If the largest buffer size has been selected and there is still a clicking sound. It means your computer performance is not able to handle the task. (It is not caused by the MicU Solo digital audio interface)*

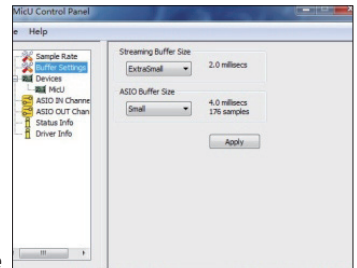


Diagram 24

3. Device settings

Shows the serial number & product ID of your MicU Solo device. If it doesn't show, it means your device is not properly installed. Please go through the "Driver Installation" process again (Page 11).

4. Monitor Mixer

Click this button to launch the "Monitor Mixer" (Page 15)

5. Playback Mixer

Click this button to launch the "Playback Mixer" (Page 16)

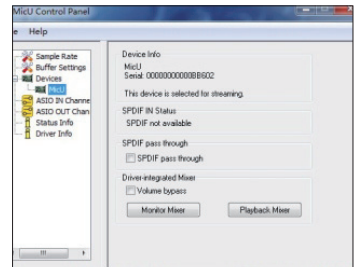
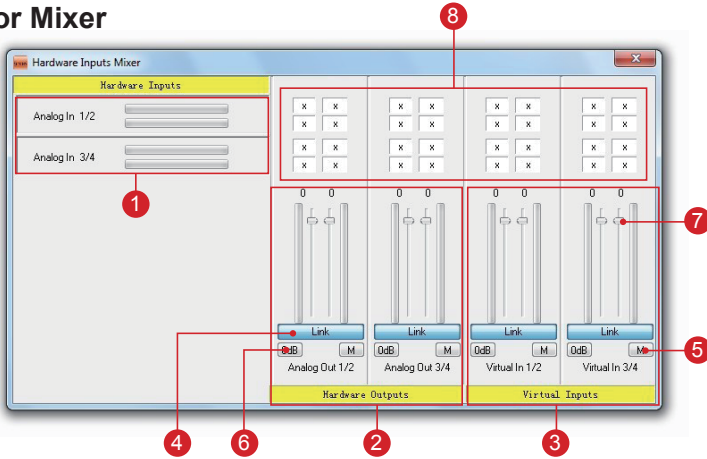


Diagram 25

Software control panel (continued)

Monitor Mixer



1. Hardware inputs level metering

Ch 1,2 input level metering
Showing the input level for the hardware input channel.

2. Hardware outputs level metering

Ch 1,2 output level metering
Showing the output level for the hardware output channel.

3. Virtual inputs level metering

Virtual 1,2 input level metering
Showing the input level for the virtual input channel.

4. Link switch

Switch to adjust both channels level simultaneously.

5. Mute switch

Switch to mute the corresponding channel.

6. “0dB” switch

Switch to instantly adjust the corresponding channel to “0dB” level.

7. Gain control fader

Slide to adjust the gain level for the corresponding channel.

8. Inputs & Outputs Matrix switches

Switch to turn On/Off the corresponding hardware input channel route to the corresponding hardware output channel. The matrix is very useful and makes your inputs and outputs very flexible. You may route any of your input(s) to any output(s).

9. Inputs & Outputs Matrix Mixer

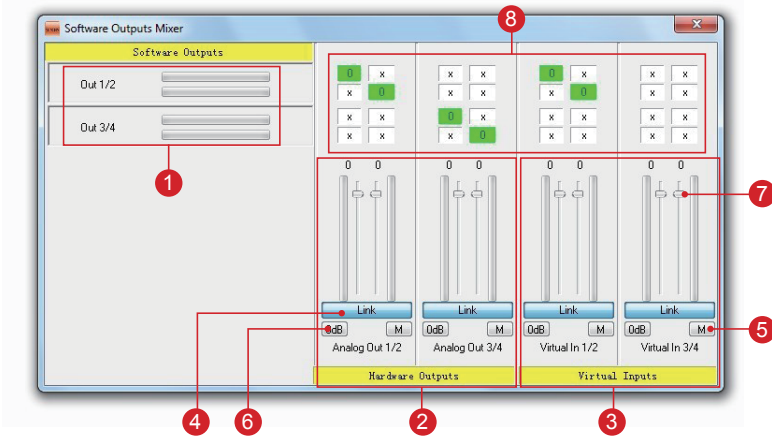
"Tick" the box to activate the mixer.

10. Inputs & Outputs Matrix Mixer Gain Control

Adjust the gain for the corresponding hardware channel.

After finishing the adjustment, click "Close" to close the window.

Playback Mixer



1. Software outputs level metering

Ch 1,2 output level metering

Showing the input level for the software input channel.

2. Hardware outputs level metering

Ch 1,2 output level metering

Showing the output level for the hardware output channel.

3. Virtual inputs level metering

Virtual 1,2 input level metering

Showing the input level for the virtual input channel.

4. Link switch

Switch to adjust both channels level simultaneously.

5. Mute switch

Switch to mute the corresponding channel.

6. "0dB" switch

Switch to instantly adjust the corresponding channel to "0dB" level.

7. Gain control fader

Slide to adjust the gain level for the corresponding channel.

8. Inputs & Outputs Matrix switches

Switch to turn On/Off the corresponding hardware input channel route to the corresponding hardware output channel. The matrix is very useful and makes your inputs and outputs very flexible. You may route any of your input(s) to any output(s).

9. Inputs & Outputs Matrix Mixer

"Tick" the box to activate the mixer.

10. Inputs & Outputs Matrix Mixer Gain Control

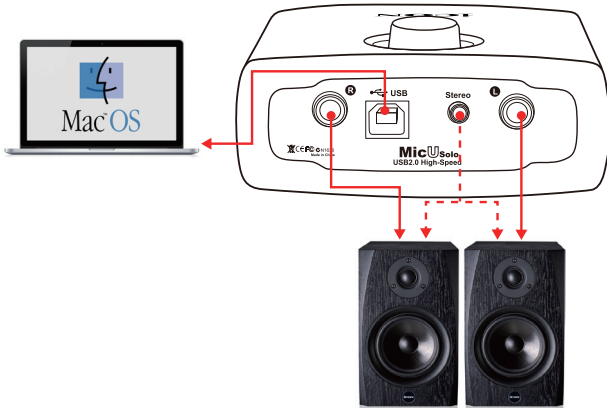
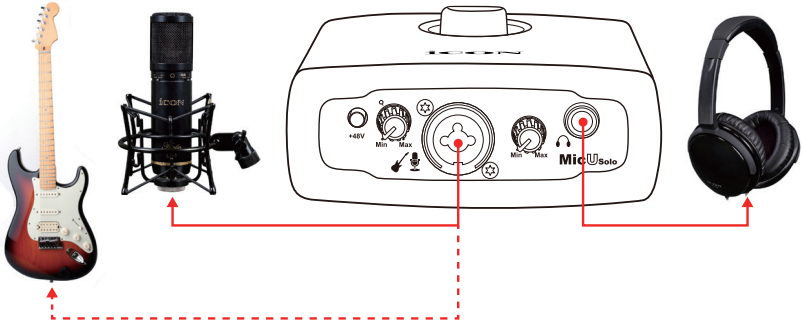
Adjust the gain for the corresponding hardware channel.
After finishing the adjustment, click "Close" to close the window.

Hardware Connections

Connect the MicU Solo digital audio interface outputs to your amplifier, powered monitors. Two-channel stereo operation, the default outputs are channels 1 and 2.

If you are monitoring through headphones, connect your headphones to the device's headphone output.

Connect your microphones/guitar to the device's analog input.



Minimum System Requirements

Important: The MicU Solo digital audio interface is supported by Mac OS (Intel-Mac), Windows XP, Windows Vista and Windows 7 (32-bit/64-bit). The MicU Solo digital audio interface is not supported by Windows 98 or Windows Me. For Windows XP, you must be running SP1 or later. Visit the Windows update web pages to make sure you have the most current updates and fixes supplied by Microsoft. On the Mac, the MicU Solo digital audio interface is supported by Mac OSX version 10.5.5 or later (must be Intel-Mac). Earlier versions of Mac operating systems are not supported.

Windows OP:

Pentium 4 -1.0GHz or higher
1.0Ghz RAM
DirectX 8.1 or higher
Windows XP (SP1), Windows 2000 (SP3),
Windows Vista or Windows 7

Mac OP:

Intel-Mac 1.0GHz or higher
1.0GHz RAM
OS 10.5.5 or later

Specifications

Mic Input:

Frequency Response:	22Hz to 22kHz (+/-0.1dB)
Dynamic Range:	93dB, A-weighted
Signal-to-Noise Ratio:	-93dB, A-weighted
THD+N:	<0.0061% (-90dB0)
Crosstalk:	-87dB @ 1kHz
Input Impedance: Mic in:	1.8K Ohms, typical
Adjustable Gain:	+34dB
Total Gain Range:	+50dB

Line Outputs 1/2 (Stereo, Unbanced):

Frequency Response:	22Hz to 22kHz (+/-0.1dB)
Dynamic Range:	100dB, A-weighted
Signal-to-Noise Ratio:	-100dB, A-weighted
THD+N:	<0.003% (-90 dB)
Crosstalk:	-100dB @ 1kHz
Nominal Output Level:	Unbalanced: +4dBV, typical;
Maximum Output Level:	+11dBV, typical;
Output Impedance:	150 Ohm
Load Impedance:	600 Ohm minimum

Headphone Outputs: (at Maximum Volume; Into 100 Ohm load):

Frequency Response:	22Hz to 22kHz (+/-1dB)
Power into Ohms:	90 mW into 100 Ohms
THD+N:	<0.06% (-66dB)
Signal-to-Noise Ratio:	-90dB, A-weighted
Max Output Level into 100 Ohms:	+2.0dBV, typical
Output Impedance:	75 Ohm
Load Impedance:	32 to 600 Ohms

Services

If your MicU Solo needs servicing, follow these instructions.

1. Ensure the problem is not related to operation error or external system devices.
2. Keep this owner's manual. We don't need it to repair the unit.
3. Pack the unit in its original packaging including end card and box. This is very important. If you have lost the packaging, please make sure you have packed the unit properly. ICON is not responsible for any damage that occurs due to non-factory packing.
4. Ship to the ICON tech support center or the local return authorization.

U.S. OFFICE:

ICON Digital Corporation
8001 Terrace Ave., Suite 201
Middleton, WI, 53562
USA

ASIA OFFICE:

ICON (Asia) Corp.
Unit 807-810, 8/F., Sunley Centre,
No. 9 Wing Yin Street, Kwai Chung, NT.,
Hong Kong.

5. For additional update information please visit our website at:
www.icon-global.com



iCON®
www.icon-global.com
info@icon-global.com

